



US005673915A

United States Patent [19] Shalders

[11] Patent Number: 5,673,915
[45] Date of Patent: Oct. 7, 1997

[54] BOARD GAME OF PROPERTY MANAGEMENT

5,169,154 12/1992 Borghi 273/256
5,388,836 2/1995 Foti 273/256

[76] Inventor: Sidney Shalders, 43 Lincoln Street,
Stanmore 2048, Sydney NSW, Australia

Primary Examiner—William E. Stoll
Attorney, Agent, or Firm—Michael I. Kroll

[57] ABSTRACT

[21] Appl. No.: 653,491

A board game (10), which comprises a game board (12) having a continuous path (14) around its perimeter divided into consecutive spaces. Most of the spaces (16) bear names of states, airports, telephone companies and interstate highways with amounts of money needed to purchase them. The first corner space (18) bears the word "GO" indicating a start position. The second corner space (20) bears the abbreviation "IRS". The third corner space (22) bears the word "JAIL", a symbol for jail and the amount of money needed to pay to get out of jail. A fourth corner space (24) bears the word "BANK". A plurality of playing pieces (26) are provided, one for each of the game players. The playing pieces (26) are of a size to fit within each of the spaces (16), (18), (20), (22) and (24) on the game board (12).

[22] Filed: May 24, 1996

[51] Int. Cl.⁶ A63F 3/00

[52] U.S. Cl. 273/256

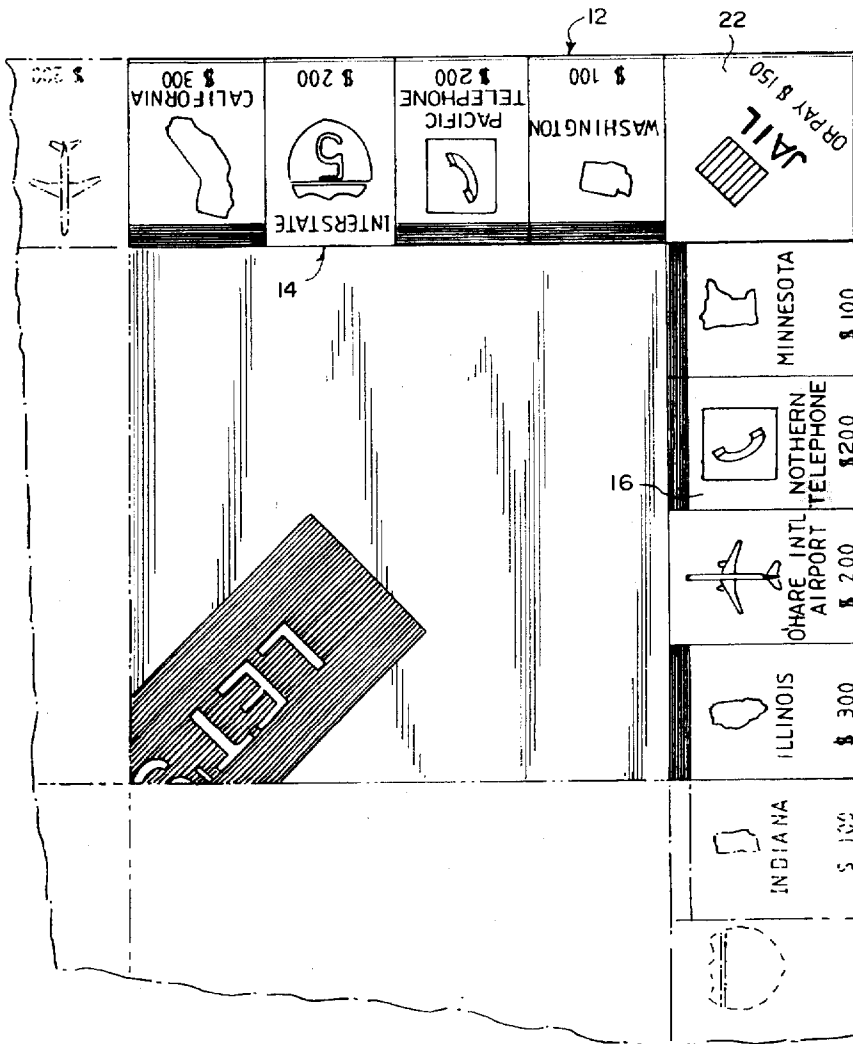
[58] Field of Search 273/242, 243,
273/248, 249, 256, 278

[56] References Cited

U.S. PATENT DOCUMENTS

2,026,082	12/1935	Darrow	273/256
2,976,044	3/1961	Corpening	273/256
4,871,177	10/1989	Mock	273/256
4,927,156	5/1990	Breslow et al.	273/256
4,936,589	6/1990	Sinclair	273/256 X

1 Claim, 15 Drawing Sheets



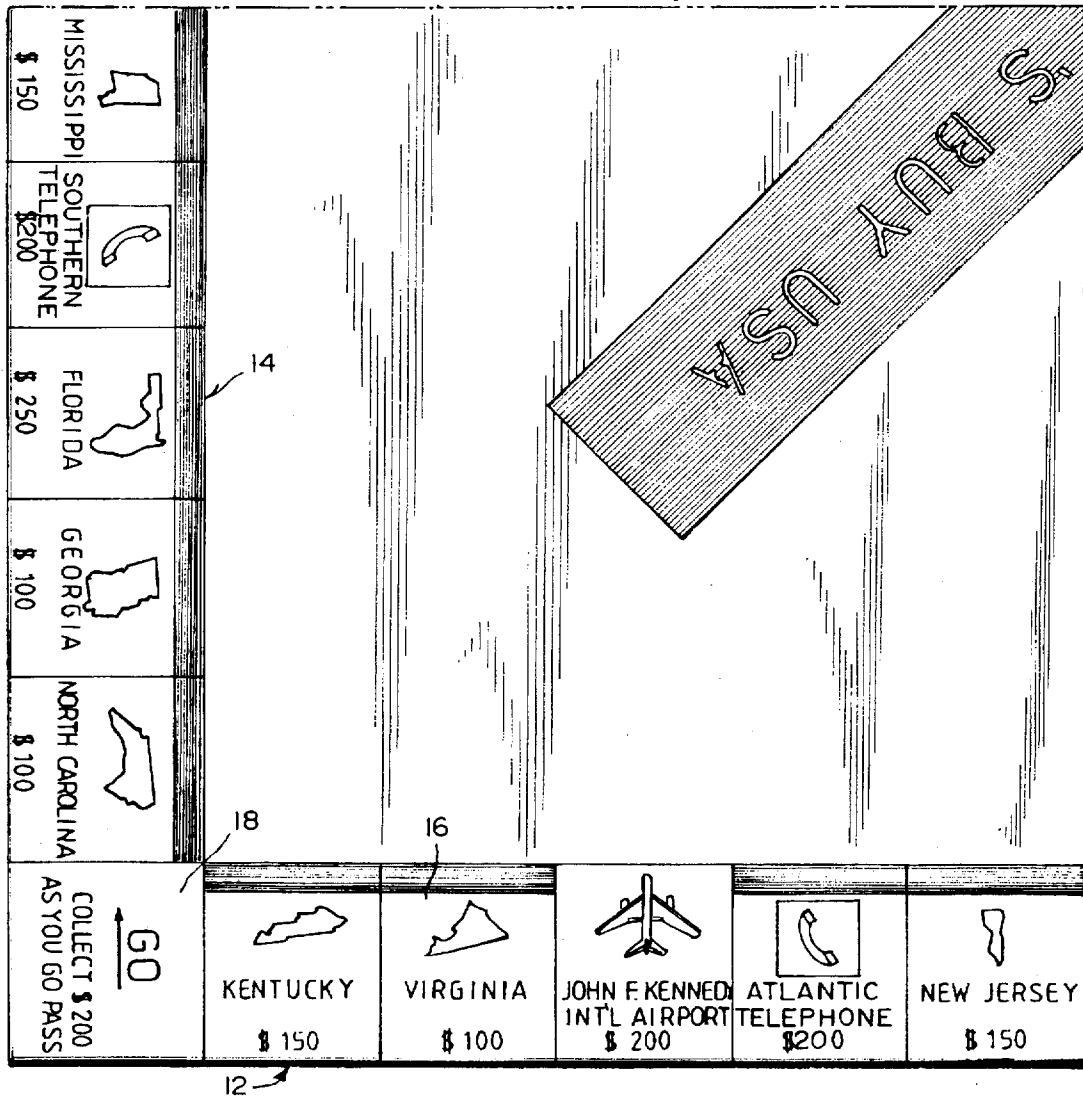
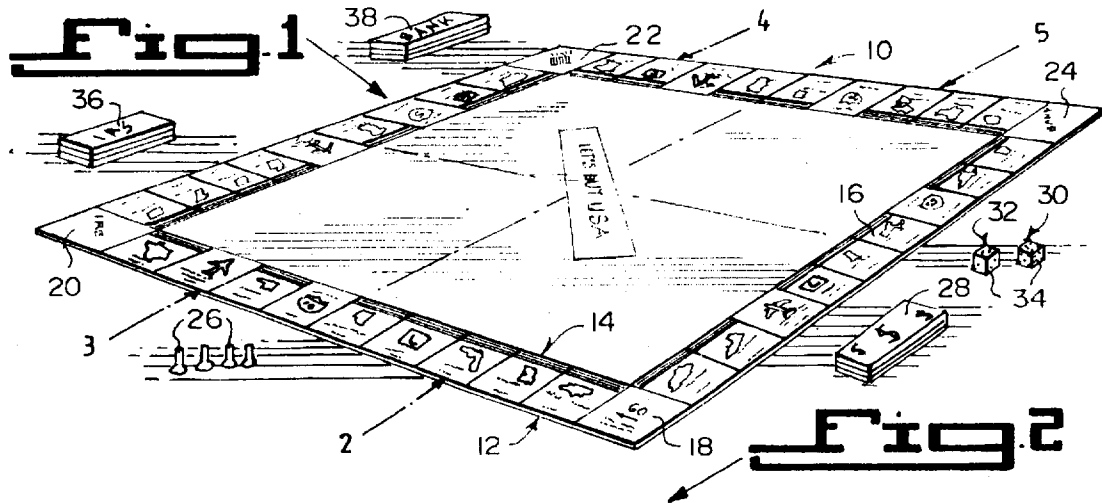


Fig. 3

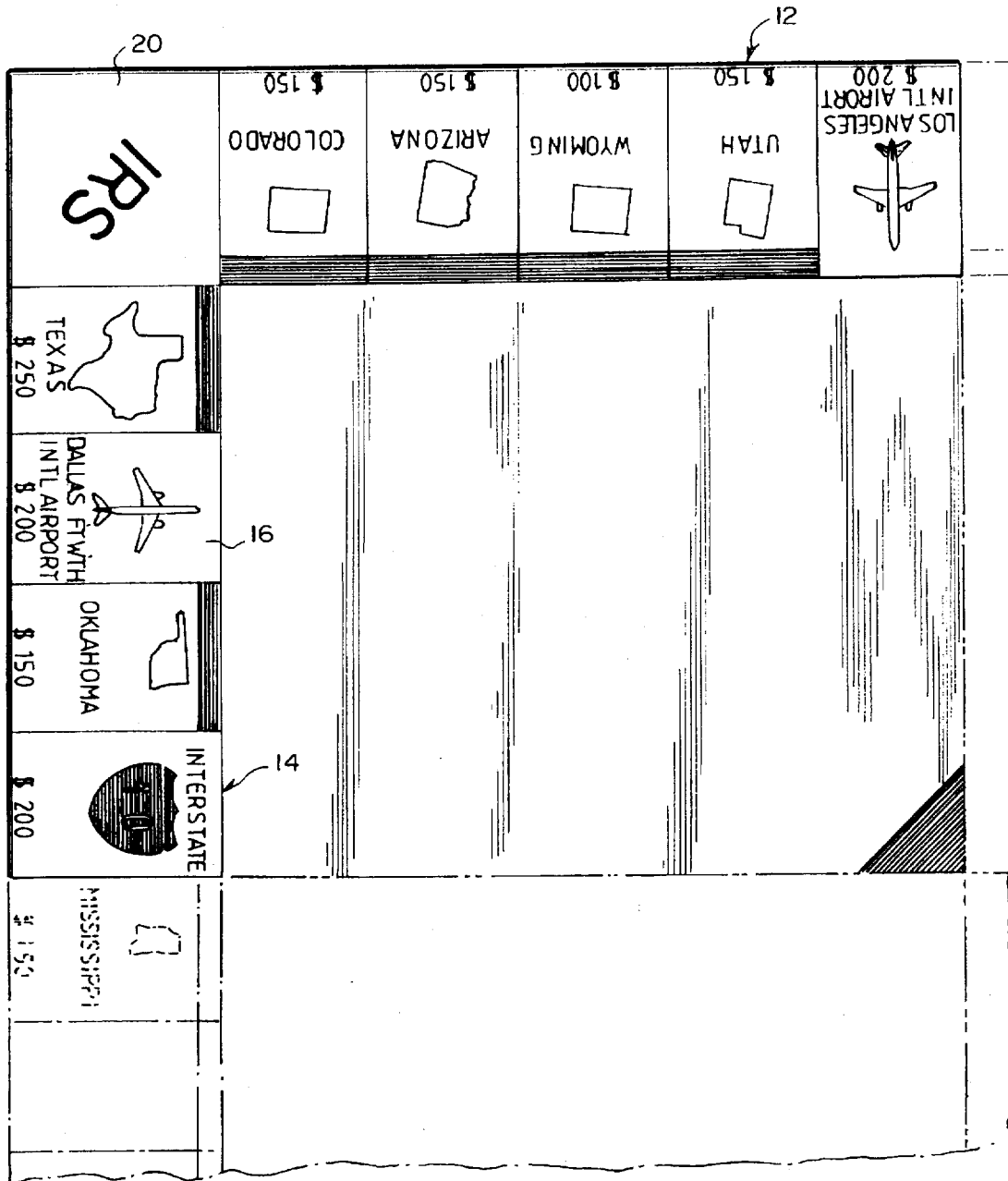
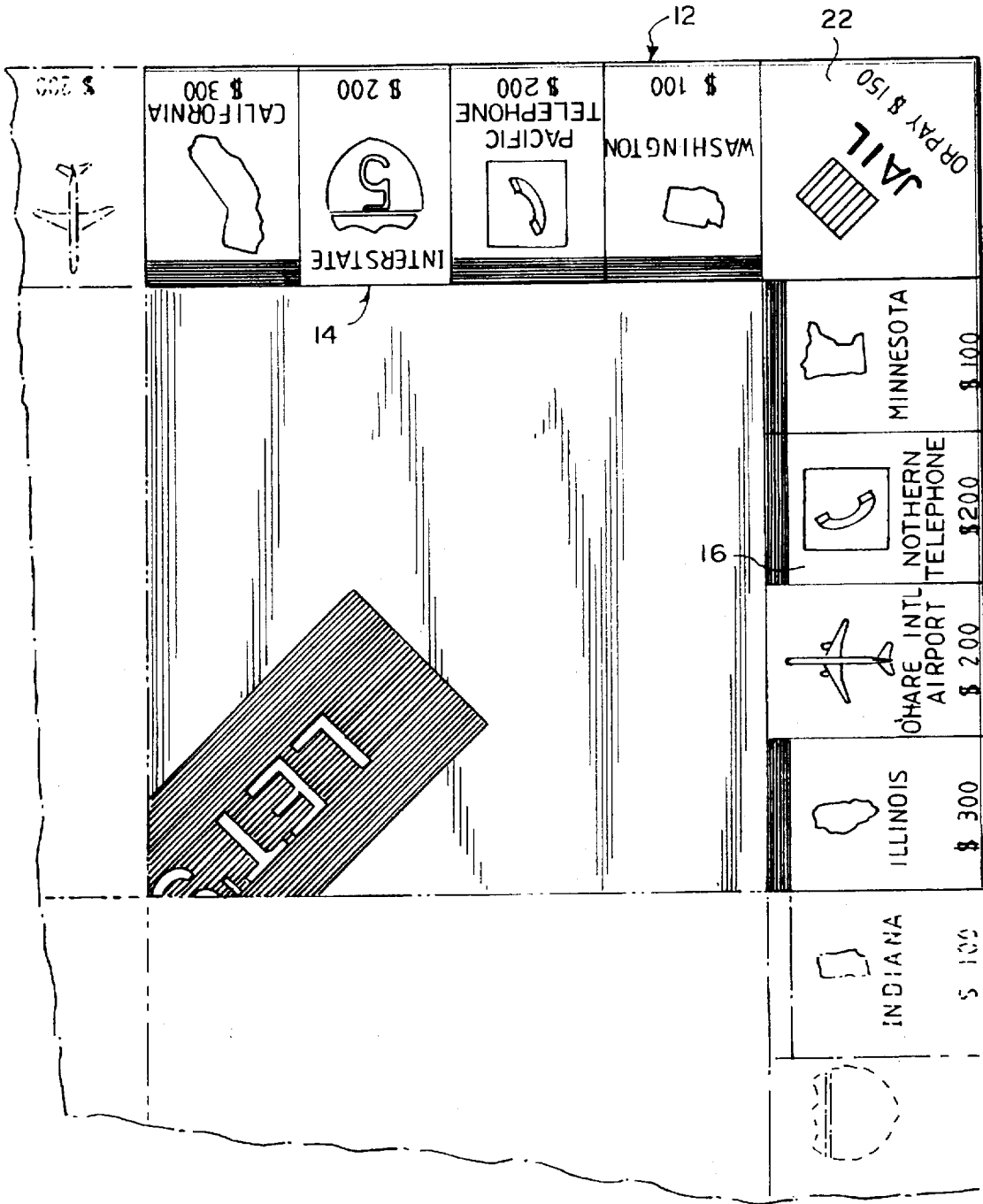
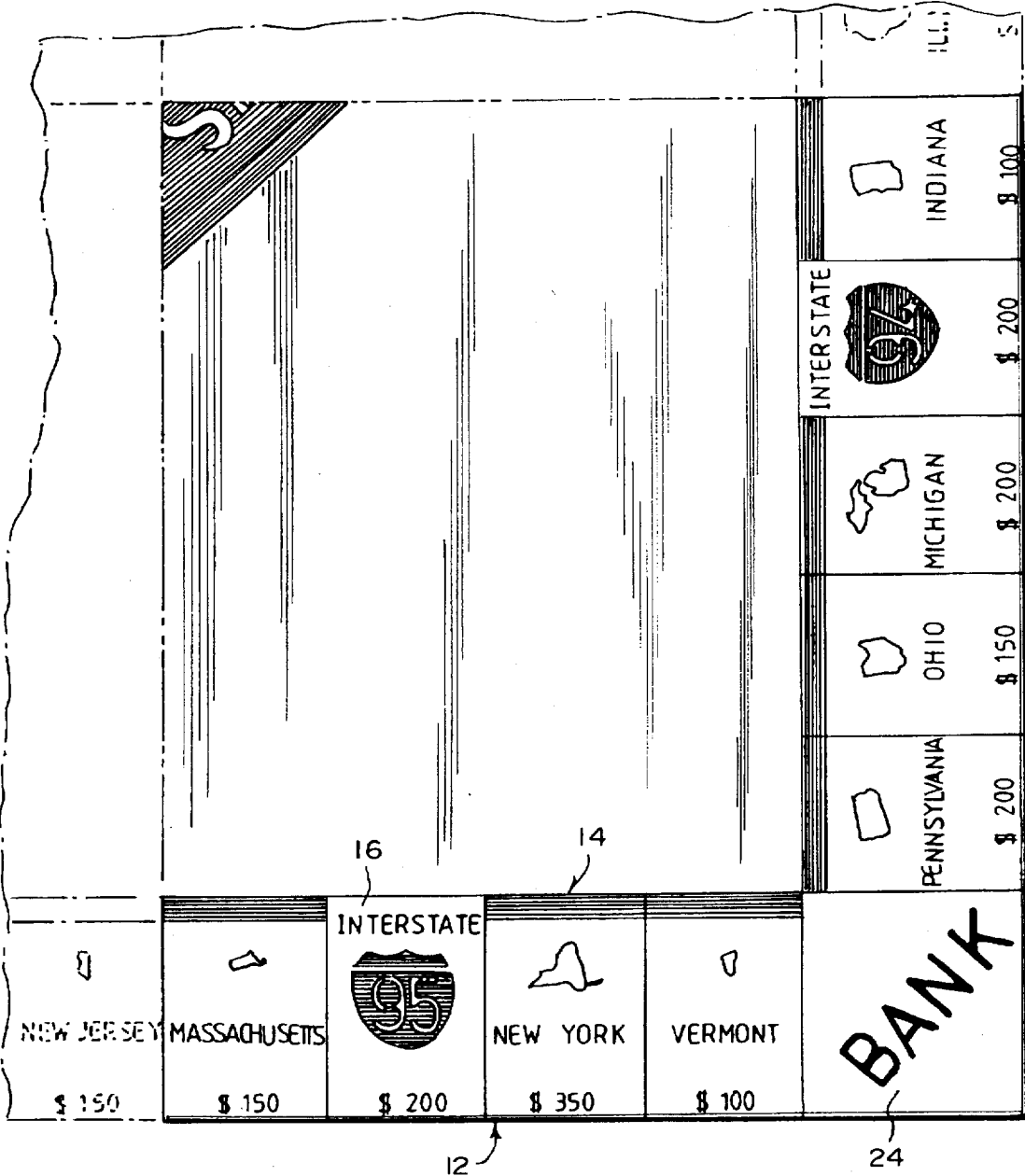


Fig. 4



FIGS



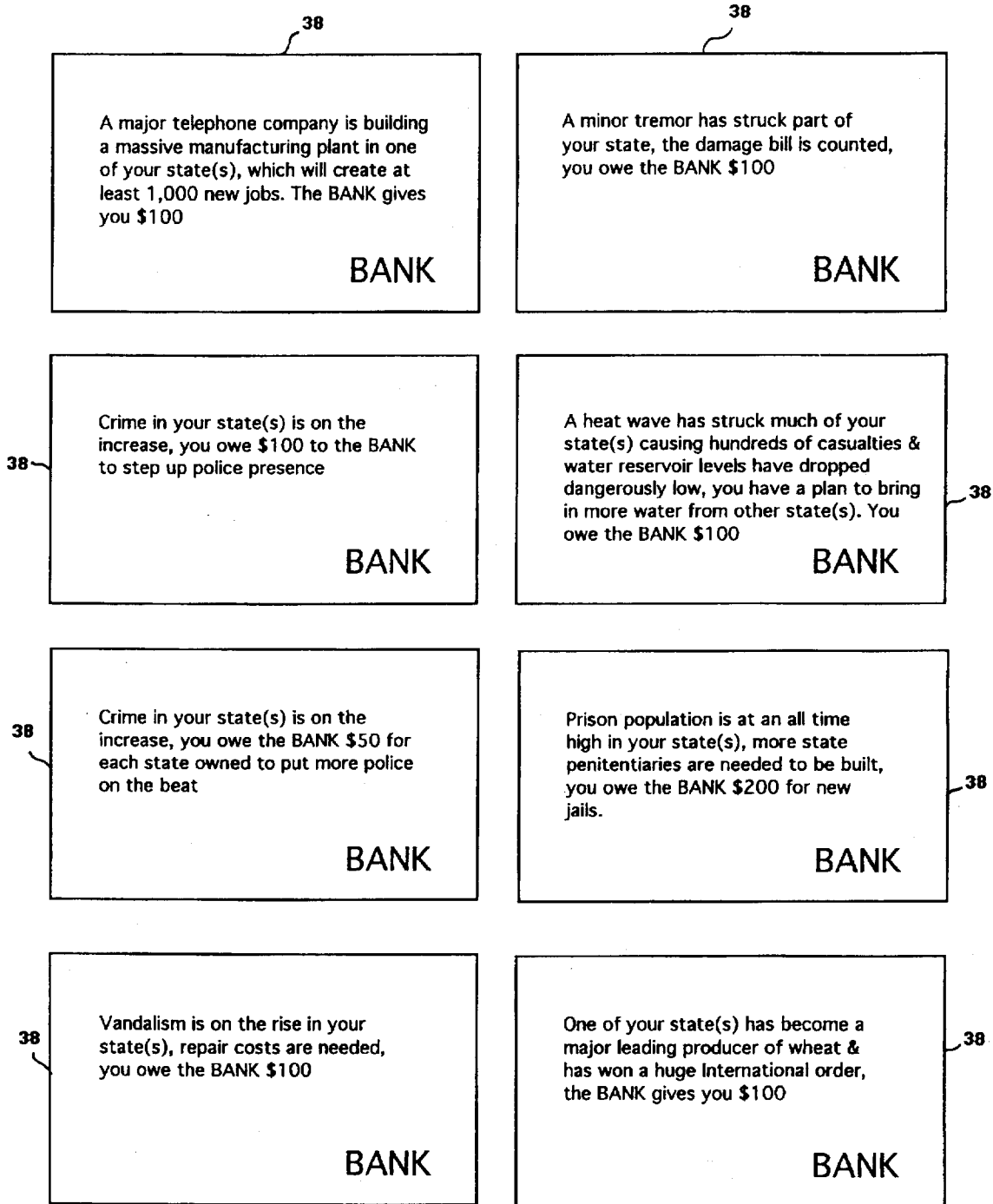


Fig. 6A

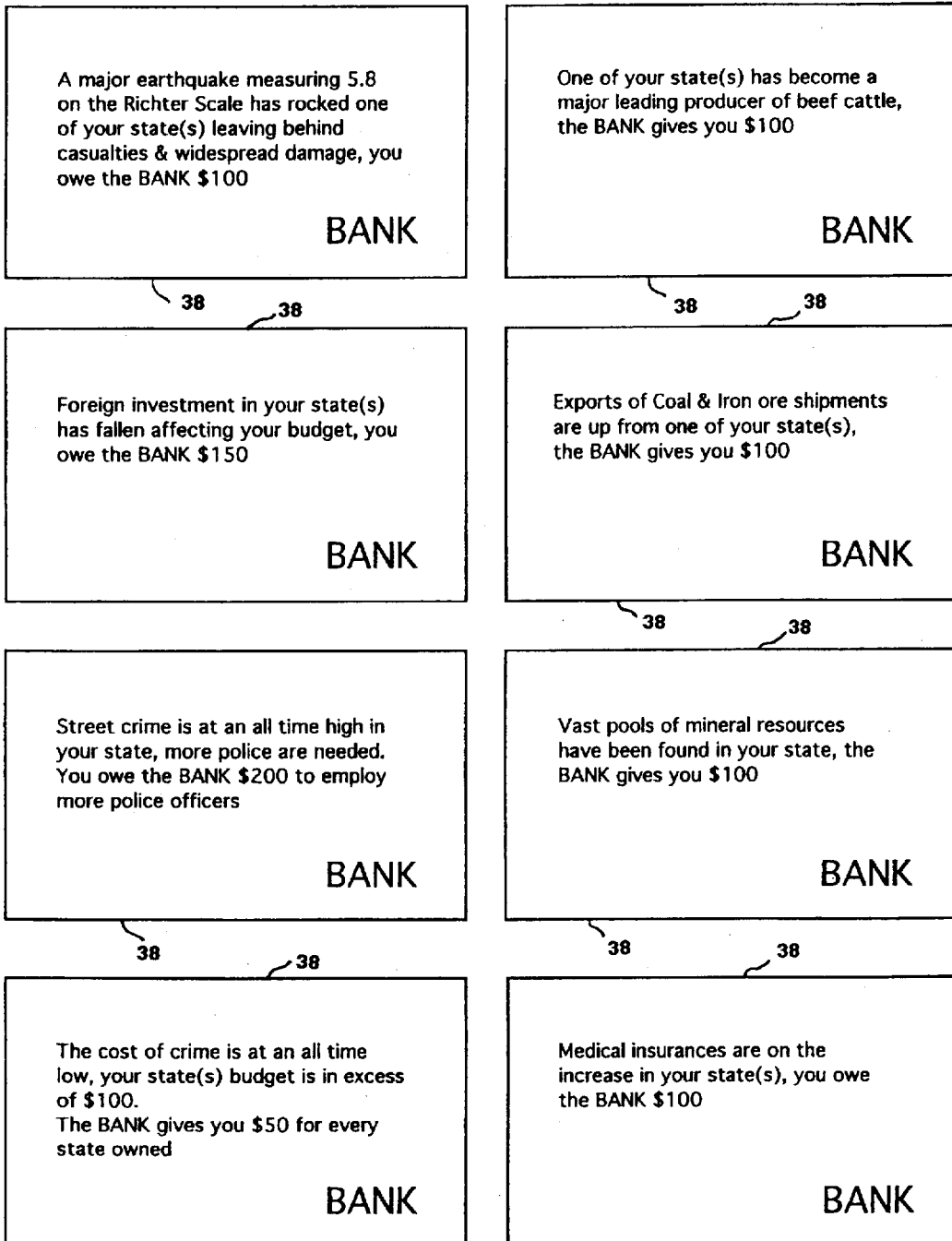
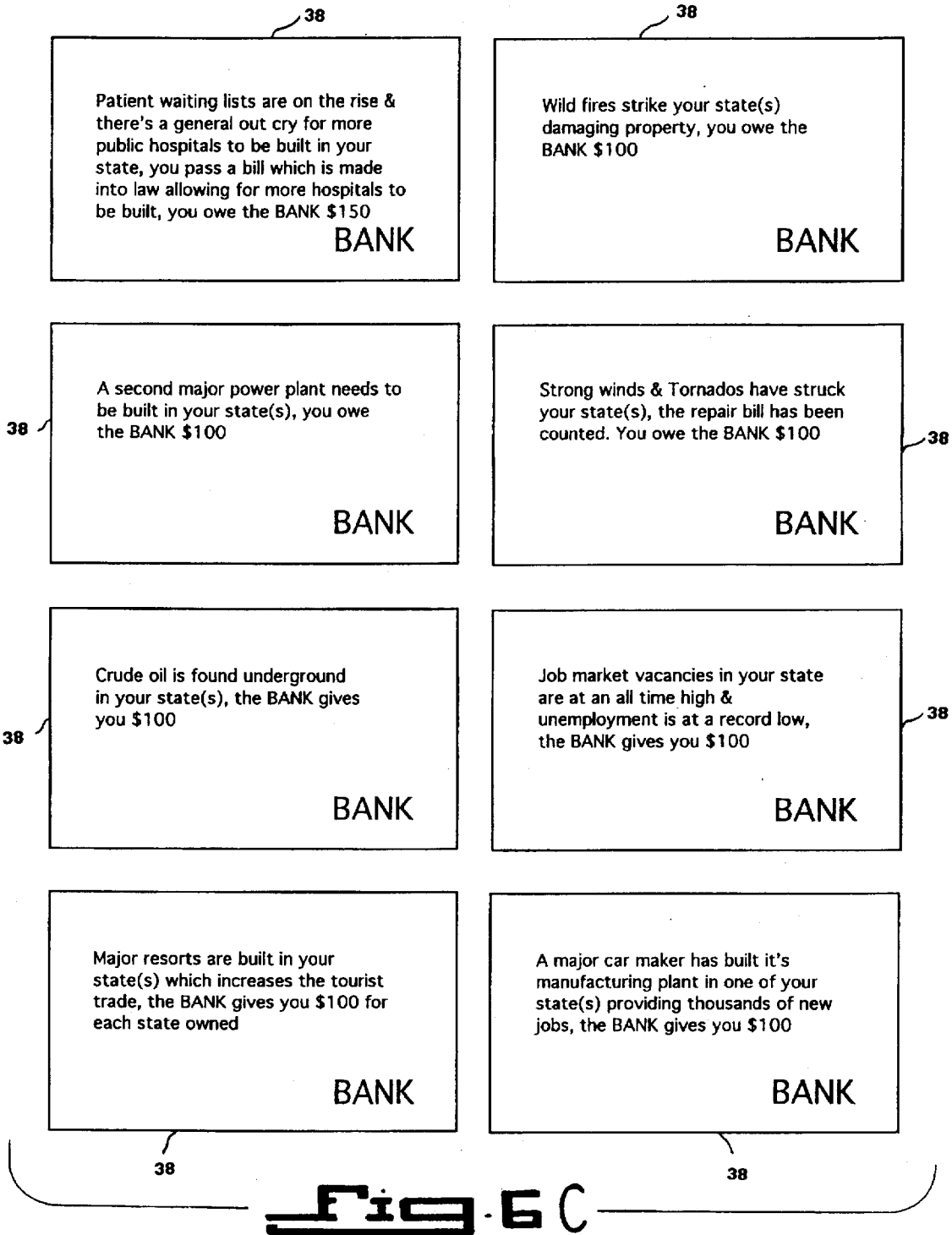
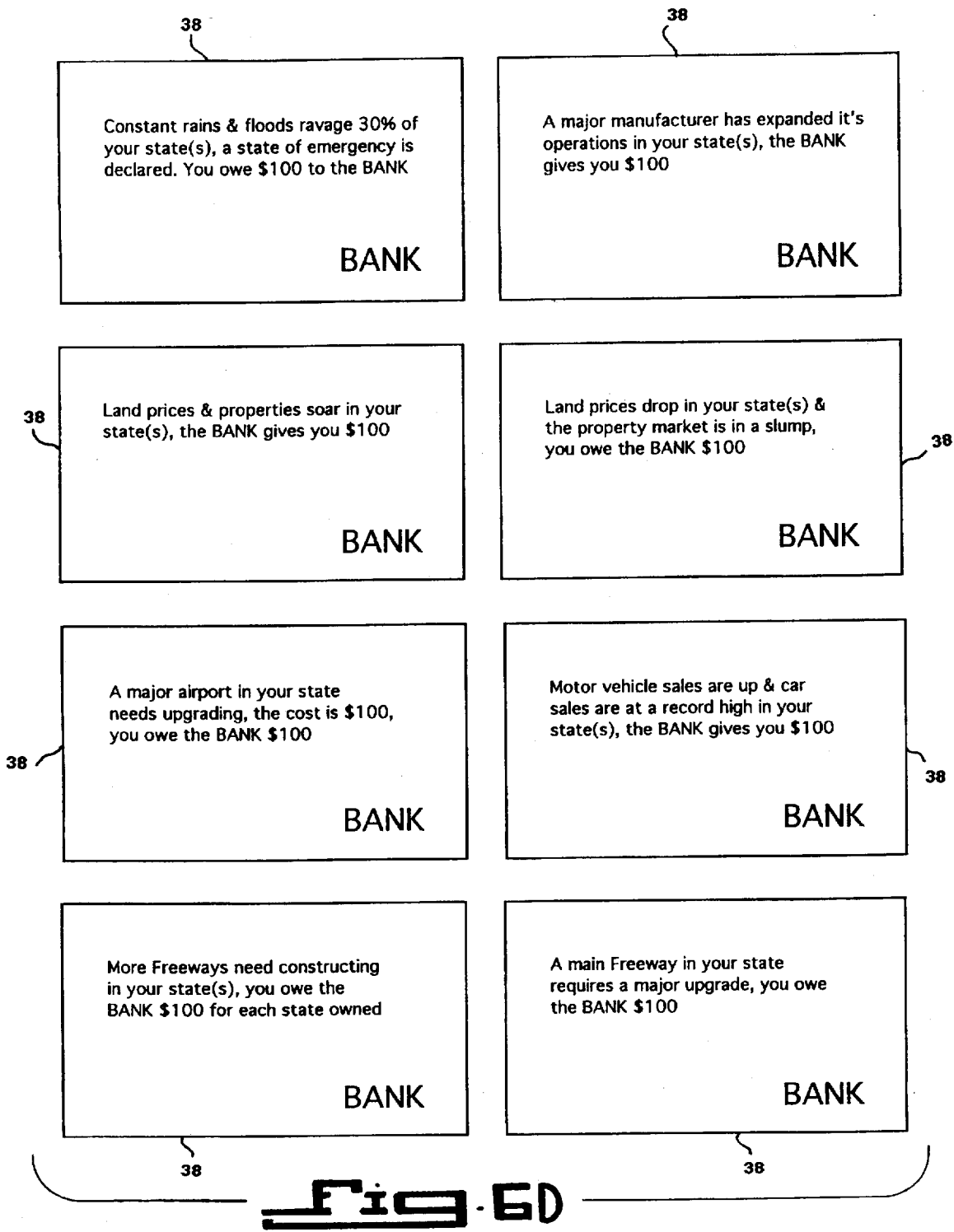


Fig. 6B





Pollution in one of your state(s) is high & beyond acceptable EPA standards, the situation needs fixing, you must pay the BANK \$100

BANK

38

More railroads need to be built in your state(s), as construction begins you owe the BANK \$100

BANK

38

Fig. 6E

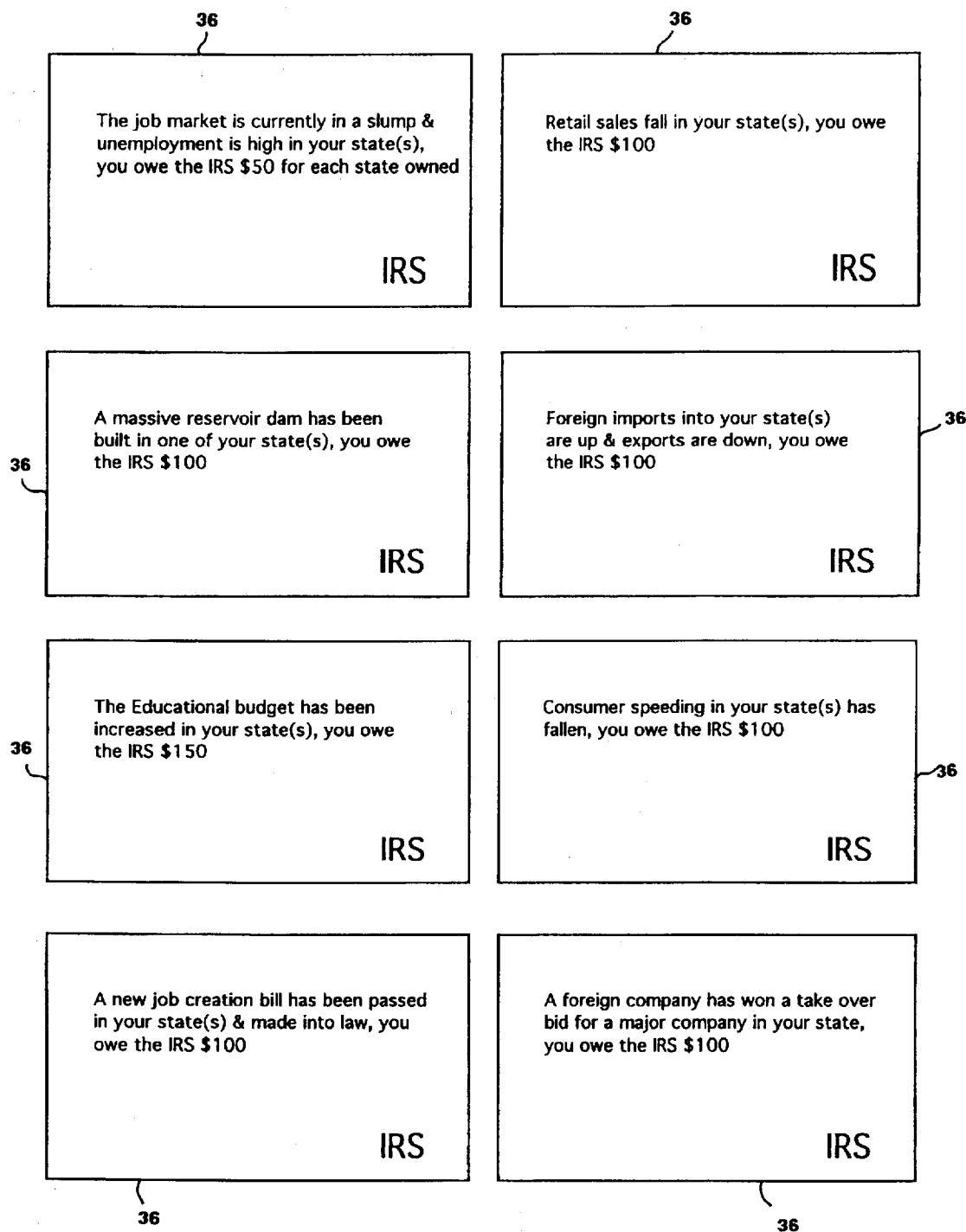


FIG. 7A

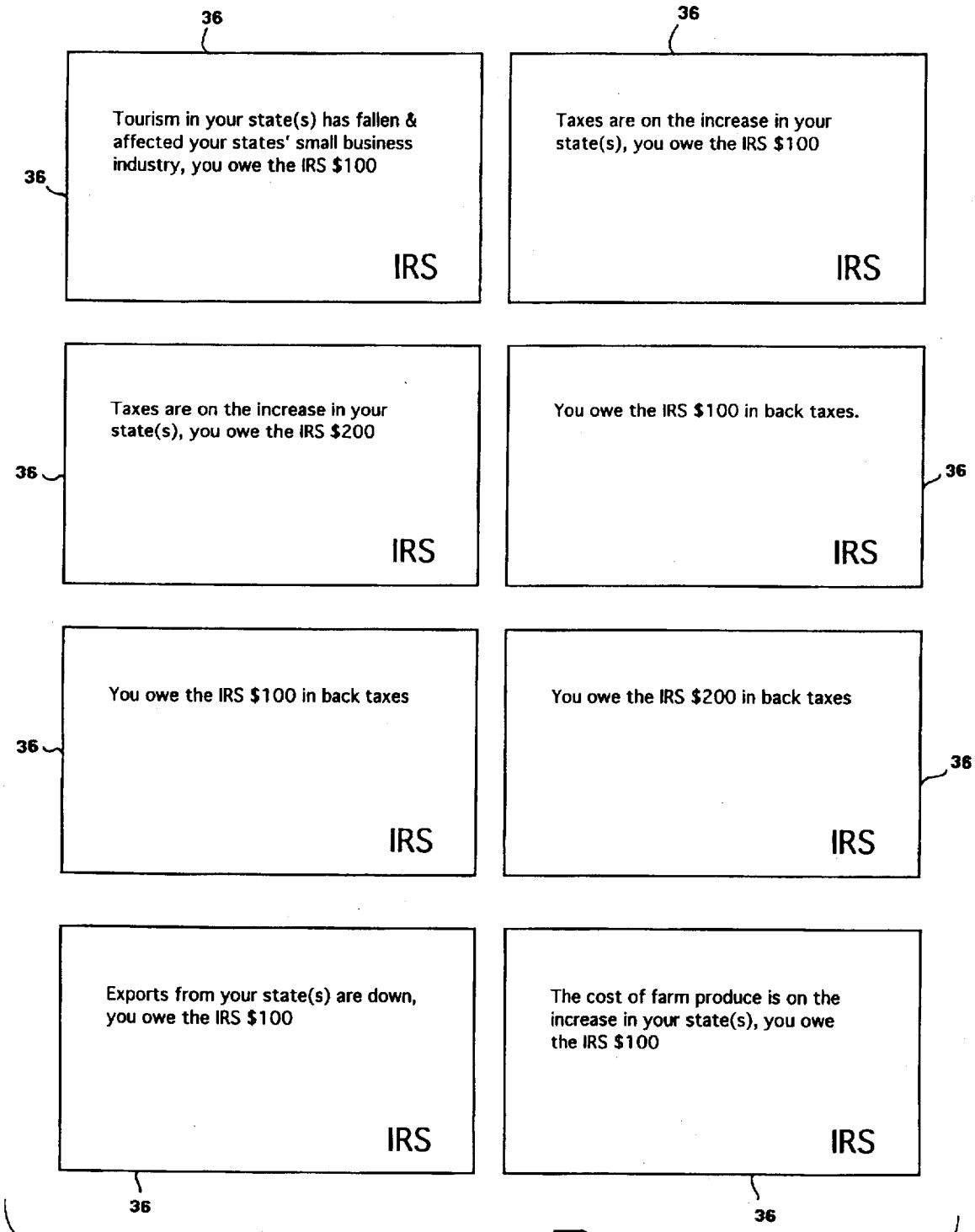


Fig. 7 B

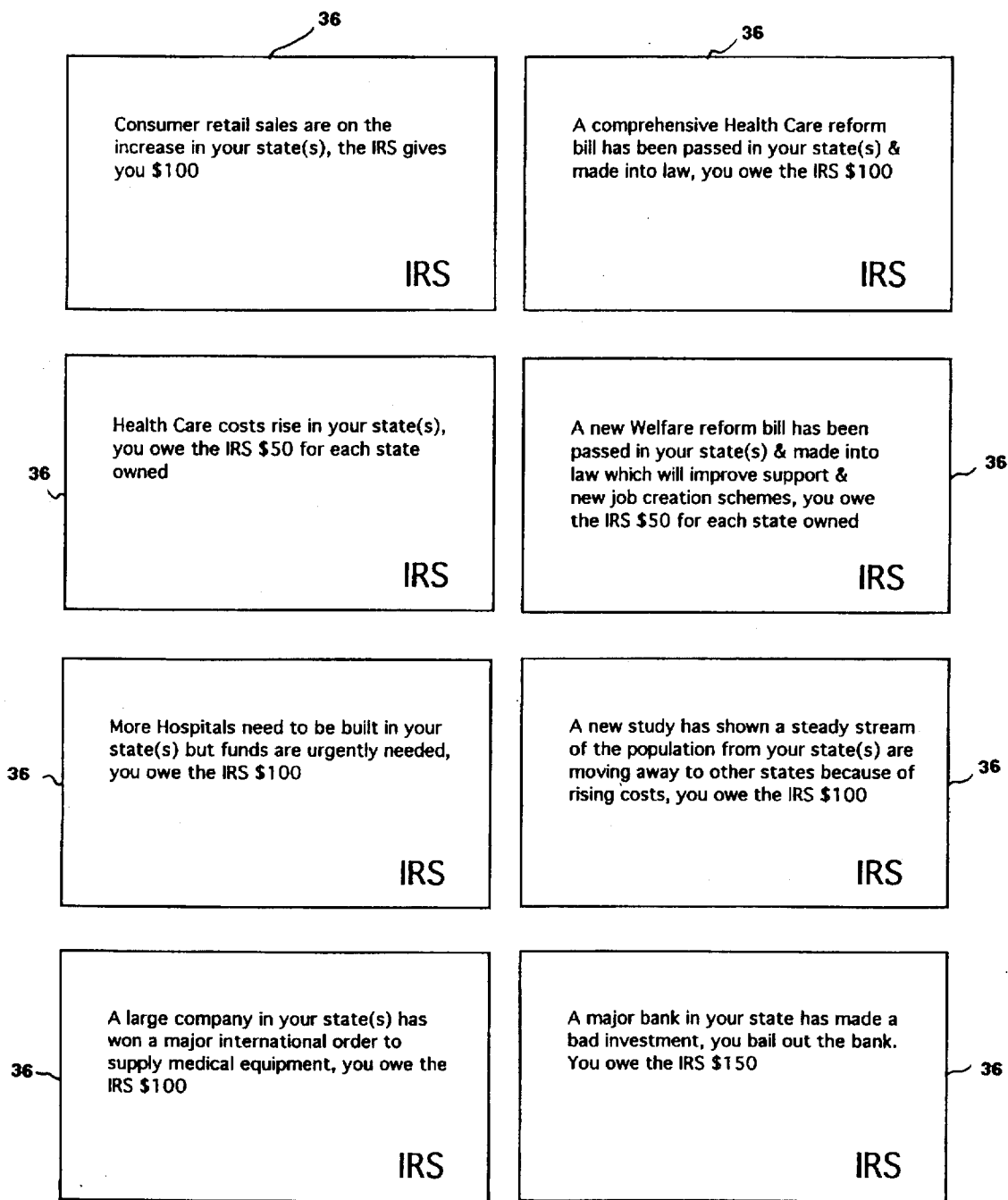


Fig. 7C

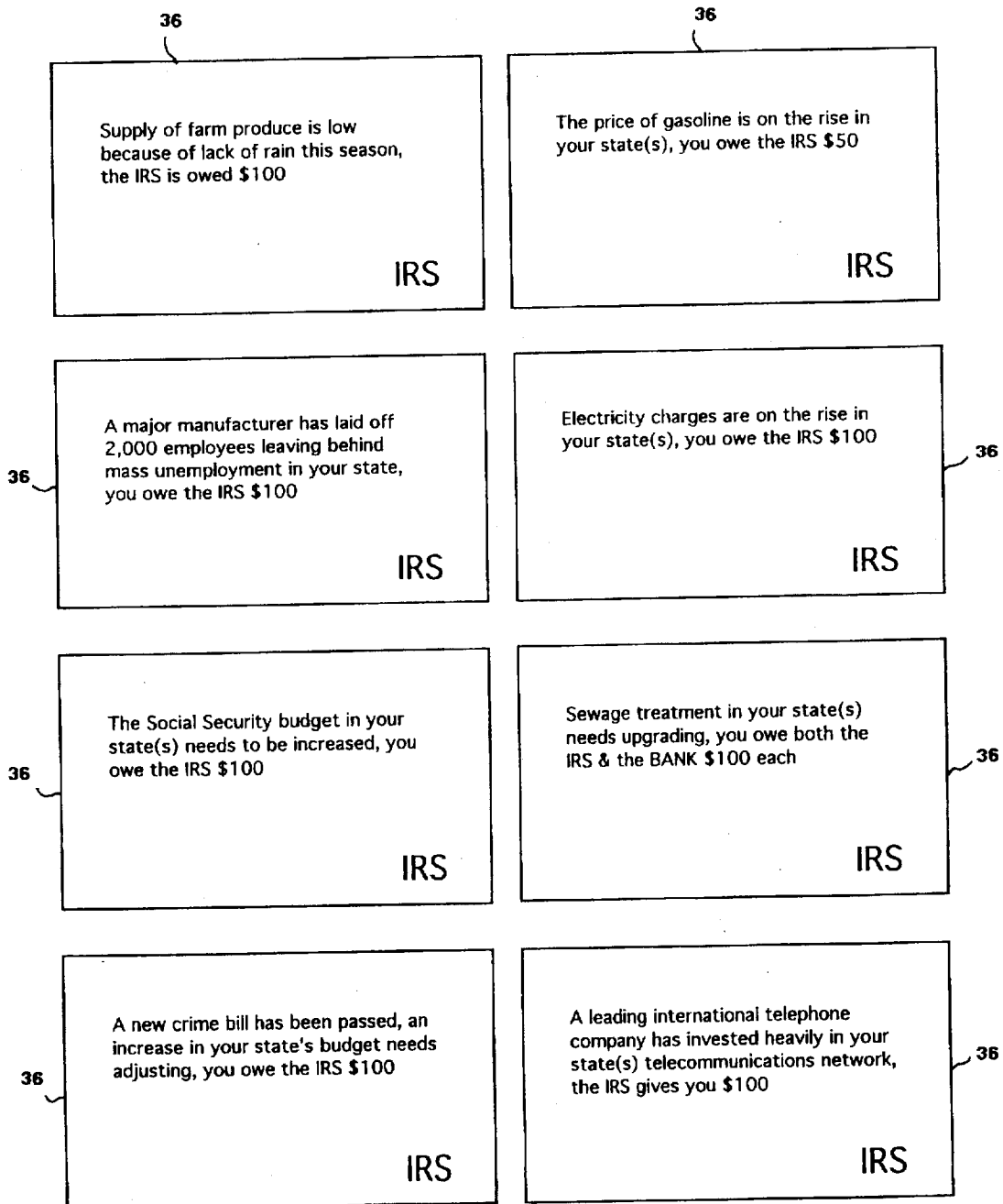


Fig. 7D

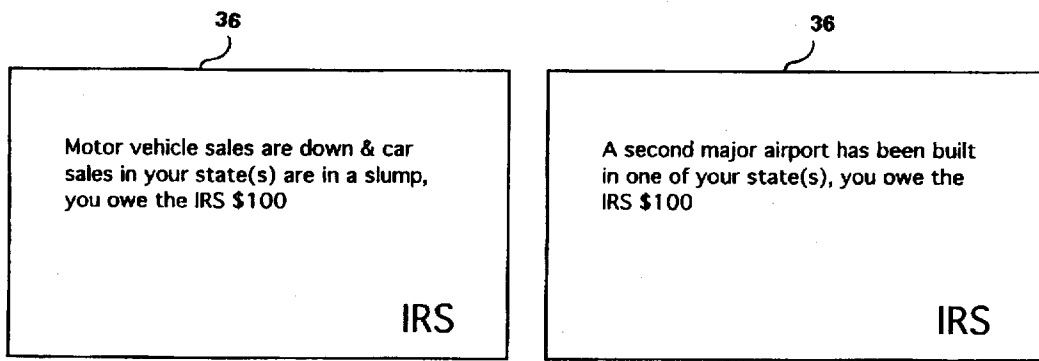
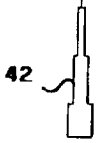




FIG. 7E

Game Pieces	Red pieces	White pieces	Blue pieces	Grey pieces
 <p>42 Single City</p>	24 Single Cities	24 Single Cities	24 Single Cities	24 Single Cities
 <p>44 Second City</p>	24 Second Cities	24 Second Cities	24 Second Cities	24 Second Cities
 <p>40 House</p>	36 Owned states	36 Owned states	36 Owned states	36 Owned states
	84 pieces	84 pieces	84 pieces	84 pieces

The colored Game Pieces represent each opponents owned property¹ on the board game. Opponents can only use one color throughout each game.

¹States with single or second cities are represented by their own Game Pieces

The House Game Piece represents an owned state with no city or cities

Owned Airports, Telephone Companies & Interstates are represented by the House Game Piece

Fig. 8

BOARD GAME OF PROPERTY MANAGEMENT

BACKGROUND OF THE INVENTION

1. Field of the Invention

The instant invention relates generally to board games and more specifically it relates to a Let's Buy USA game.

2. Description of the Prior Art

Numerous board games have been provided in prior art that are adapted to entertain the players by challenging them, so that they utilize their skill and acumen in playing the games, while at the same time, an element of chance adds a bit of adventure and luck to the games. While these units may be suitable for the particular purpose to which they address, they would not be as suitable for the purposes of the present invention as heretofore described.

SUMMARY OF THE INVENTION

A primary object of the present invention is to provide a Let's Buy USA game that will overcome the shortcomings of the prior art devices.

Another object is to provide a Let's Buy USA game in which the players utilize financial situations in purchasing states, airports, telephone companies or interstate highways, when playing the game.

An additional object is to provide a Let's Buy USA game in which there is a balance between skill and chance when playing the game, so as to entertain all of the players.

A further object is to provide a Let's Buy USA game that is simple and easy to use.

A still further object is to provide a Let's Buy USA game that is economical in cost to manufacture.

Further objects of the invention will appear as the description proceeds.

To the accomplishment of the above and related objects, this invention may be embodied in the form illustrated in the accompanying drawings, attention being called to the fact, however, that the drawings are illustrative only, and that changes may be made in the specific construction illustrated and described within the scope of the appended claims.

BRIEF DESCRIPTION OF THE DRAWING FIGURES

Various other objects, features and attendant advantages of the present invention will become more fully appreciated as the same becomes better understood when considered in conjunction with the accompanying drawings, in which like reference characters designate the same or similar parts throughout the several views, and wherein;

FIG. 1 is a perspective view showing the various components of the instant invention.

FIG. 2 is an enlarged top view of a first portion of the game board as indicated by arrow 2 in FIG. 1.

FIG. 3 is an enlarged top view of a second portion of the game board as indicated by arrow 3 in FIG. 1.

FIG. 4 is an enlarged top view of a third portion of the game board as indicated by arrow 4 in FIG. 1.

FIG. 5 is an enlarged top view of a fourth portion of the game board as indicated by arrow 5 in FIG. 1.

FIGS. 6A to 6E are plan views of the various bank cards.

FIGS. 7A to 7E are plan views of the various IRS cards.

FIG. 8 is a chart showing the various game pieces needed for playing the game.

Similar reference characters denote corresponding features consistently throughout the attached drawings.

DETAILED DESCRIPTION OF THE PREFERRED EMBODIMENTS

Turning now descriptively to the drawings, in which similar reference characters denote similar elements throughout the several views, FIGS. 1 through 8 illustrate a Let's Buy USA game 10, which comprises a game board 12 having a continuous path 14 around its perimeter divided into consecutive spaces. Most of the spaces 16 bear names of states, airports, telephone companies and interstate highways, with amounts of money needed to purchase them. The first corner space 18 bears the word "GO" indicating a start position. The second corner space 20 bears the abbreviation "IRS". The third corner space 22 bears the word "JAIL", a symbol for jail and the amount of money needed to pay to get out of jail. A fourth corner space 24 bears the word "BANK". A plurality of playing pieces 26 are provided, one for each of the game players. The playing pieces 26 are of a size to fit within each of the spaces 16, 18, 20, 22 and 24 on the game board 12.

Play money 28 of different denominations, is for distribution of part thereof to each player. A chance determining facility 30 indicates the movement of each playing piece 26, to a particular space 16, 18, 20, and 24 in the path 14 on the game board 12. The chance determining facility 30 includes two cubed gaming pieces 32. Each cubed gaming piece 32 will produce a random output count in positive integers, with each integer being a number in a base seven system. The cubed gaming pieces 32 are a standard pair of dice 34.

A plurality of IRS cards 36 are placed in a deck. When one playing piece 26 lands on the second corner space 20, that player will pick the top IRS card 36 from the deck and follow instructions thereon (see FIGS. 7A to 7E). A plurality of BANK cards 38 are placed in a deck. When one playing piece 26 lands on the fourth corner space 24, that player will pick the top BANK card 38 from the deck and follow instructions thereon (see FIGS. 6A to 6E).

As shown in the chart in FIG. 8, a plurality of miniature house game pieces 40 are distinctively identified to form a set for each player. The house game pieces 40 can be purchased and used by the players on the spaces 16 for states, airports, telephone companies and interstate highways owned on the game board 12. A plurality of miniature single city game pieces 42 are distinctively identified to form a set for each player. The single city game pieces 42 can be purchased and used by the players on the spaces 16, for states owned on the game board 12.

A plurality of miniature second city game pieces 44 are distinctively identified to form a set for each player. The second city game pieces 44 can be purchased and used by the players on the spaces 16, for states owned on the game board 12.

RULES OF THE GAME

1. Each player starts off with \$700 dollars at the beginning of each game.
2. When landing on an IRS or BANK space with no cash in reserve and instructed to pay money, a player has to forfeit one of the states to the Federal Reserve. That can be any of players choosing regardless of a city or more. The player is allowed only the original cash price for the state with cities omitted, airports, telephone companies or interstate highways the player owns to sell to the Federal Reserve to pay the IRS or BANK.

3. Once a state, airport, telephone company or interstate highway has been forfeited, it becomes free land until a player lands on it and purchases it.
4. The Federal Reserve is the central government authority which sells unowned land and purchases back properties from players, as well as giving each the 200 dollars when passing the GO space in the game board.
5. To build a single city on a players state the player must pay the Federal Reserve 600 dollars when it is the players turn. Each player is allowed to have a maximum of two cities per state. The price of a second city in each state will cost another 600 dollars, making the total price of two cities in a state 1,200 dollars.
6. Landing on a state without a city, but belonging to another player will cost the player 50 dollars.
7. Landing on another player's state with a single city will cost the player 200 dollars. Landing on another player's state with two cities will cost the player 400 dollars.
8. Landing on another player's airport, telephone company or interstate highway will cost the player 200 dollars.
9. If a player owns all the airports, another player must pay that owner the total cost of all the airports together, if that player lands on any airport. Similarly, if a player owns all the telephone companies or interstate highways, another player must pay that owner the total cost of all the telephone companies or interstate highways together, if the player land on any one of them.
10. If a player lands on any property, such as a state (whether it has a single city or more), airport, telephone company or interstate highway owned by another player and that player has no money, the player can sell his own property back to the Federal Reserve for the original cash price to pay the owner. This can be any property or properties belonging to the player. Once a state, airport, telephone company or interstate highway has been forfeited, it becomes free land until a player lands on it and purchases it.
11. If the player cannot afford to pay the owner the price, then that player has to forfeit the game. The property or properties owned by that player then becomes free land. This does not include property already free to be purchased by any player landing on it.
12. When landing on the IRS space, a player must pick up a single IRS card from the top of the deck. Similarly, when landing on the BANK space, a player must pick up a single BANK card from the top of the deck.
13. If a player lands on the JAIL space, that player must pay 150 dollars to the Federal Reserve, to get out of JAIL the next time it is that players turn. If the player does not want to pay the 150 dollars required to get out of JAIL, then that player can roll the pair of dice when it is that players turn. If double numbers appear on the pair of dice that player can get out of JAIL without paying the required amount.
14. The last player remaining in the game wins.

LIST OF REFERENCE NUMBERS

- 10 Let's Buy USA game
 12 game board of 10
 14 continuous path on 12
 16 space in 14
 18 first corner space "GO" in 14
 20 second corner space "IRS" in 14
 22 third corner space "JAIL" in 14
 24 fourth corner space "BANK" in 14
 26 playing piece of 10
 28 play money of 10

- 30 change determining facility of 10
 32 cubed gaming piece of 30
 34 standard pair of dice for 32
 36 IRS card of 10
 38 BANK card of 10
 40 miniature house game piece of 10
 42 miniature single city game piece of 10
 44 miniature second city game piece of 10

It will be understood that each of the elements described above, or two or more together may also find a useful application in other types of methods differing from the type described above.

While certain novel features of this invention have been shown and described are pointed out in the annexed claims, it is not intended to be limited to the details above, since it will be understood that various omissions, modifications, substitutions and changes in the forms and details of the device illustrated and in its operation can be made by those skilled in the art without departing in any way from the spirit of the present invention.

Without further analysis, the foregoing will so fully reveal the gist of the present invention that others can, by applying current knowledge, readily adapt it for various applications without omitting features that, from the standpoint of prior art, fairly constitute essential characteristics of the generic or specific aspects of this invention.

What is claimed is new and desired to be protected by Letters Patent is set forth in the appended claims:

1. A board game, which comprises:

- a) a game board having a continuous path around its perimeter divided into consecutive spaces, most of the spaces bearing names of states, airports, telephone companies and interstate highways with amounts of money needed to purchase them, the first corner space bearing the word "GO" indicating a start position, the second corner space bearing the abbreviation "IRS", the third corner space bearing the word "JAIL", a symbol for jail and the amount of money needed to pay to get out of jail and a fourth corner space bearing the word bank;
- b) a plurality of playing pieces, color coded one for each of the game players, said playing pieces being of a size to fit within each of the spaces on said game board;
- c) play money of different denominations for distribution of part thereof to each player;
- d) a chance determining means comprising dice to indicate the movement of each said playing piece to a particular space in the path on said game board;
- e) a plurality of IRS cards placed in a deck, whereby when one said playing piece lands on the second corner space, that player will pick the top IRS card from the deck and follow instruction thereon and become familiar with actions taken by the IRS, usually resulting in the necessity to pay additional taxes;
- f) a plurality of BANK cards placed in a deck, whereby when one said playing piece lands on the fourth corner space, that player will pick the top BANK card from the deck and follow instruction thereon and become acquainted with a variety of different banking functions;
- g) a plurality of miniature house game pieces, distinctively identified to form a set for each player coded by color to match the color of the player's playing piece, so that said house game pieces can be purchased and used by the players on said spaces for states, airports, telephone companies and interstate highways owned on said game board;

5

- h) a plurality of miniature single city game pieces each in the form of a skyscraper distinctively identified to form a set for each player coded by color to match the color of the player's playing piece, so that said single city game pieces can be purchased and used by the players on said spaces for states owned on said game board; and
- i) a plurality of miniature second city game pieces each in the form of a pair of adjoining skyscrapers distinctively

6

identified to form a set for each player coded by color to match the color of the player's playing piece, so that said second city game pieces can be purchased and used by the players on said spaces for states owned on said game board for identifying a second city in a state where there is already one city established.

* * * * *