



US00D374088S

United States Patent [19] Collier

[11] **Patent Number:** Des. 374,088
[45] **Date of Patent:** **Sep. 24, 1996

[54] **PREFABRICATED SHELTER**
[76] **Inventor:** Leroy H. Collier, 716 Gay St.,
Portsmouth, Ohio 45662
[**] **Term:** 14 Years
[21] **Appl. No.:** 19,822
[22] **Filed:** Mar. 11, 1994

4,885,879 12/1989 Plantier 52/86 X
5,159,790 11/1992 Harding 52/86
5,295,335 3/1994 Collier 52/86
5,333,421 8/1994 McKenna 52/86

Primary Examiner—Doris V. Coles
Attorney, Agent, or Firm—Michael I. Kroll

[57] CLAIM

The ornamental design for a prefabricated shelter, as shown and described.

Related U.S. Application Data

[63] Continuation-in-part of Ser. No. 952,957, Sep. 28, 1992, Pat. No. 5,295,335.
[52] **U.S. Cl.** D25/56
[58] **Field of Search** D25/56, 1, 18,
D25/16; 52/273, 86, 79.8, 292, 293.3, 143;
135/114, 115, 116, 97; 47/29

DESCRIPTION

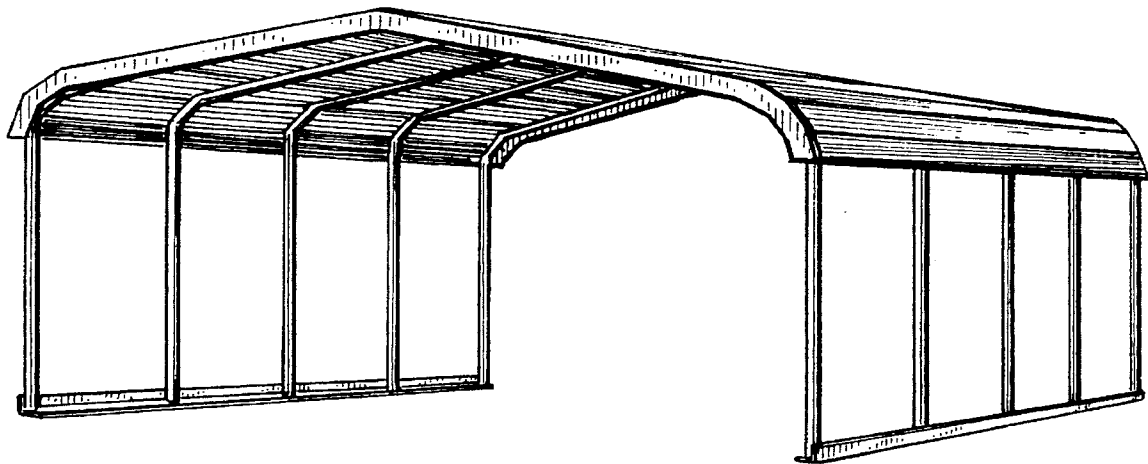
FIG. 1 is a front perspective view of a prefabricated shelter showing my new design;
FIG. 2 is a top plan view of a prefabricated shelter showing my new design;
FIG. 3 is a front elevational view, the rear elevational view being the same of a prefabricated shelter showing my new design;
FIG. 4 is a right side elevational view, the left side elevational view being the same of a prefabricated shelter showing my new design; and,
FIG. 5 is a bottom plan view of a prefabricated shelter showing my new design.

[56] References Cited

U.S. PATENT DOCUMENTS

2,185,532 1/1940 Waterman et al. D25/18
2,274,949 3/1942 Blaski 52/86
2,675,769 4/1954 Dosker 52/86 X
2,764,107 9/1956 Niswonger et al. 135/97 X
4,285,162 8/1981 Hilton 47/29
4,347,690 9/1982 Wallace, Jr. 52/86 X

1 Claim, 3 Drawing Sheets



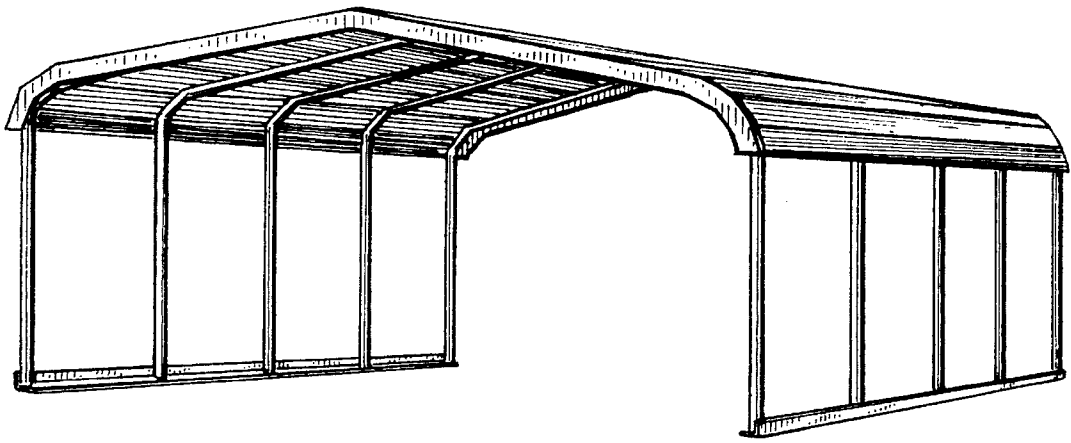


Fig. 1

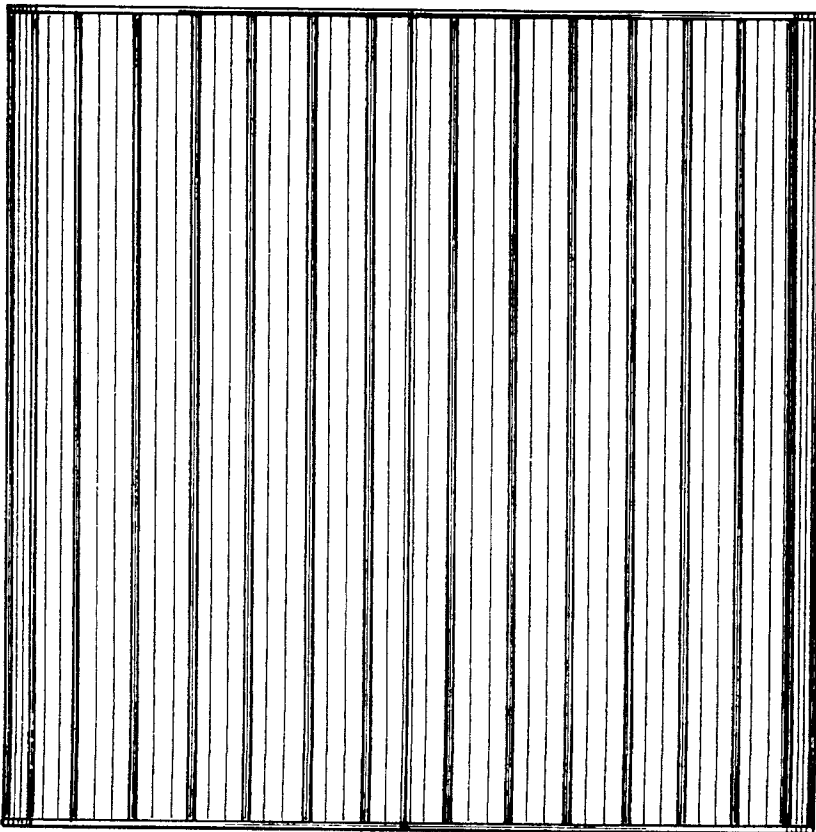


Fig. 2

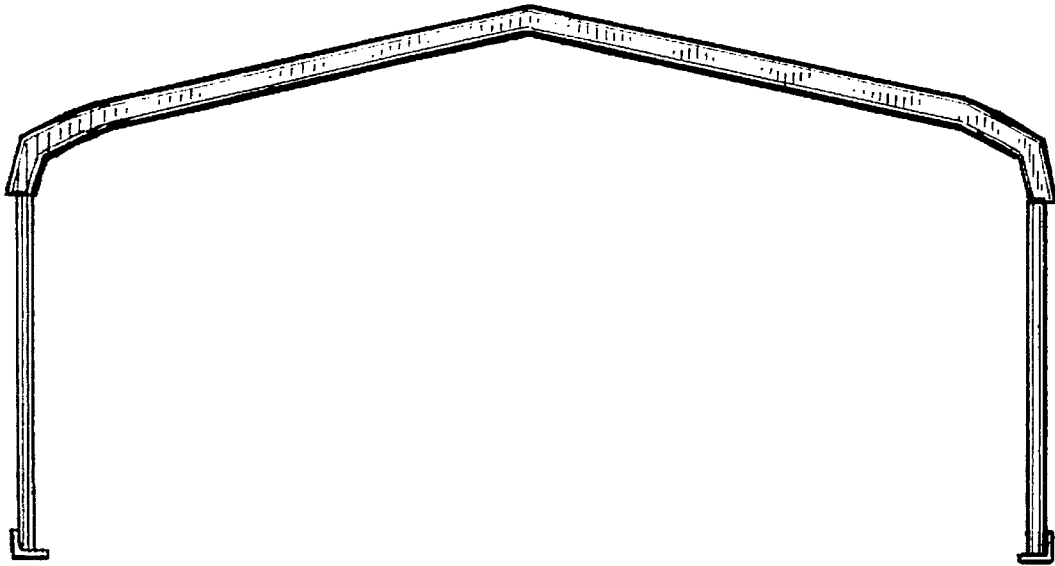


FIG. 3

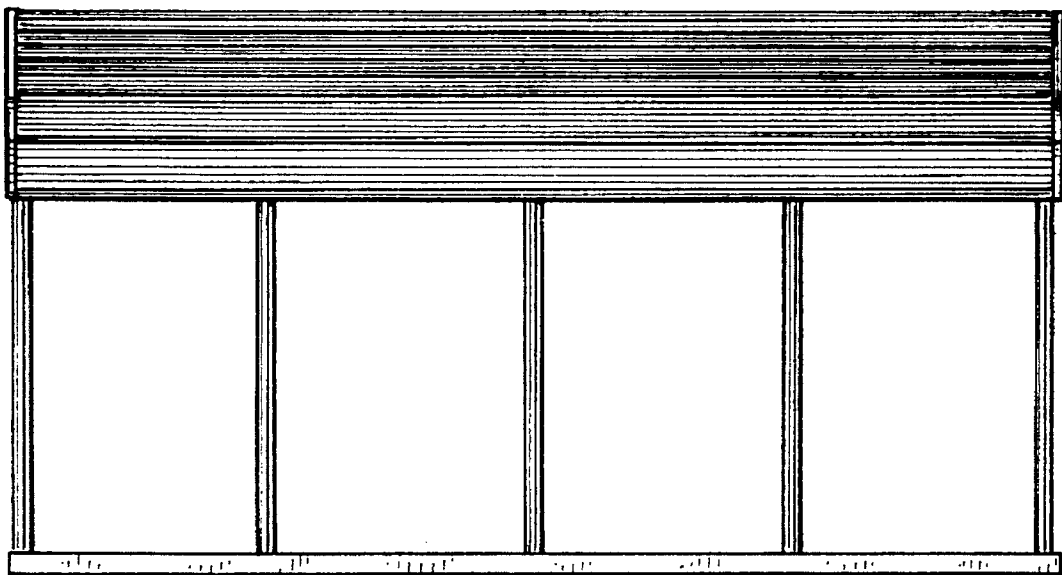


FIG. 4

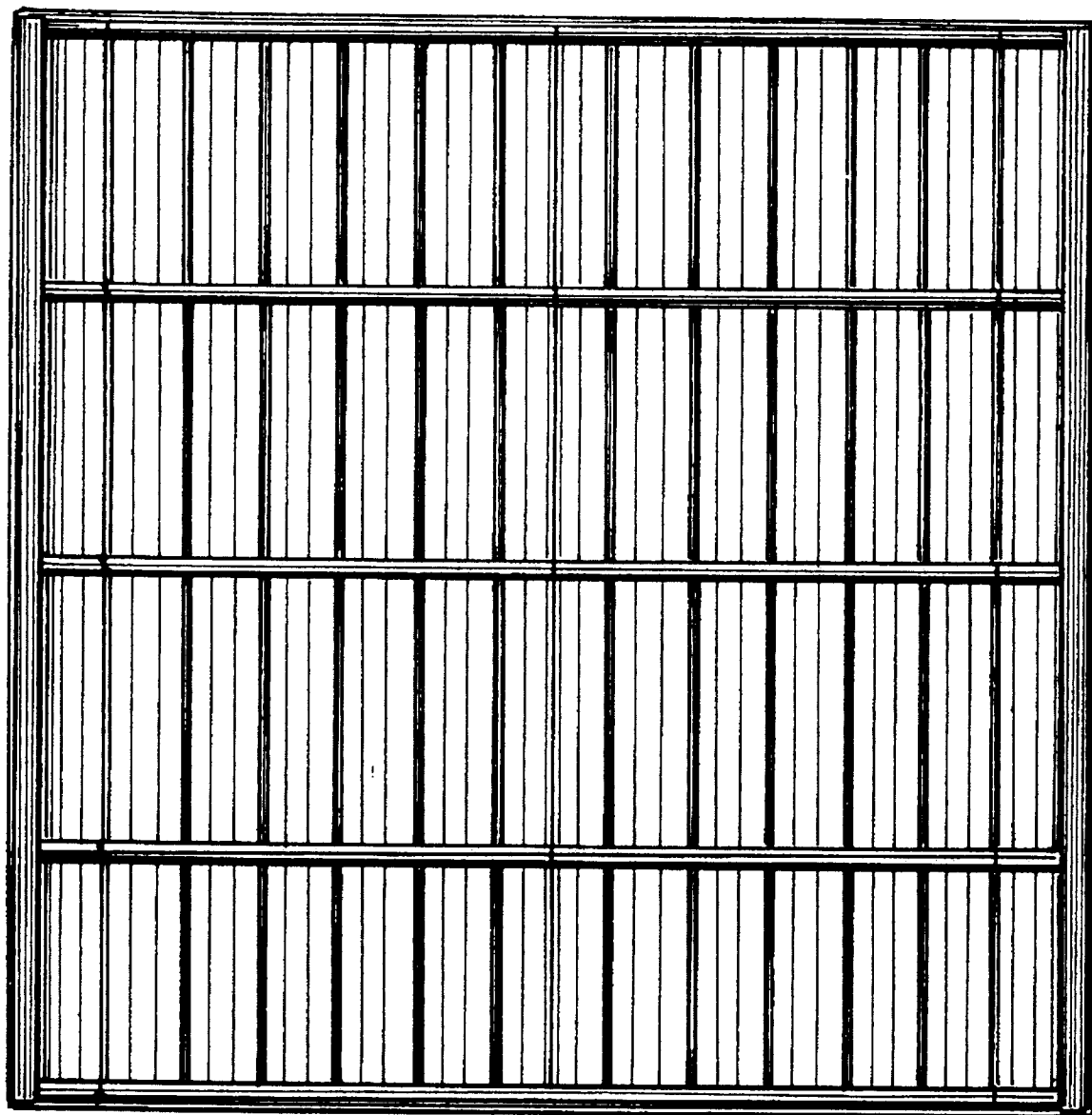


Fig. 5