



US00D486239S

(12) **United States Design Patent** (10) **Patent No.:** **US D486,239 S**
Kell (45) **Date of Patent:** **** Feb. 3, 2004**

(54) **DOUBLE DRIVE THRU ESPRESSO UNIT** D445,914 S * 7/2001 Helminiak D25/33
D462,451 S 9/2002 Smith et al.

(76) Inventor: **Michael S Kell**, 165 S. Oregon St.,
Jacksonville, OR (US) 97530

* cited by examiner

(**) Term: **14 Years**

Primary Examiner—Doris Clark
(74) *Attorney, Agent, or Firm*—Michael I Kroll

(21) Appl. No.: **29/180,642**

(57) **CLAIM**

(22) Filed: **Apr. 28, 2003**

The ornamental design for a double drive thru espresso unit,
as shown and described.

(51) **LOC (7) Cl.** **25-03**

(52) **U.S. Cl.** **D25/33**

(58) **Field of Search** D25/33, 1, 32;
52/79.1, 79.7

DESCRIPTION

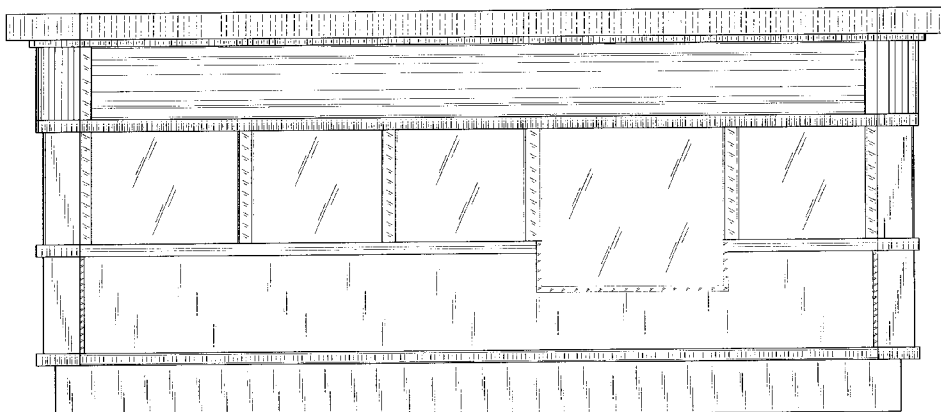
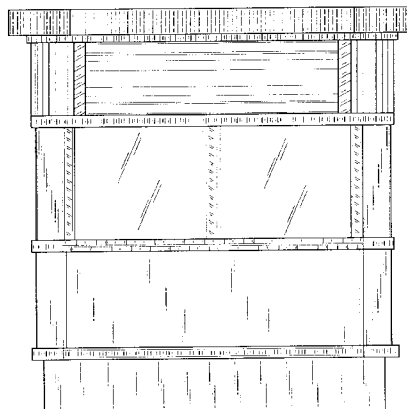
(56) **References Cited**

U.S. PATENT DOCUMENTS

D123,640 S	11/1940	Thomason	
D128,137 S	7/1941	Gruber	
D129,934 S	10/1941	Valentine	
D130,028 S	10/1941	Leabo	
D147,881 S	11/1947	Valentine	
D300,857 S	4/1989	Adcock	
D308,097 S	5/1990	McMahon	
D313,473 S	1/1991	Isenhour et al.	
D344,345 S	* 2/1994	Goldberg D25/33
D424,700 S	5/2000	Horton	

FIG. 1 is a front elevational view of the double drive thru espresso unit showing my new design;
FIG. 2 is a rear elevation view of the double drive thru espresso unit showing my new design;
FIG. 3 is a left side elevational view of the double drive thru espresso unit showing my new design;
FIG. 4 is a right side elevational view of the double drive thru espresso unit showing my new design;
FIG. 5 is a top view of the double drive thru espresso unit showing my new design; and,
FIG. 6 is a bottom view of the double drive thru espresso unit showing my new design.

1 Claim, 6 Drawing Sheets



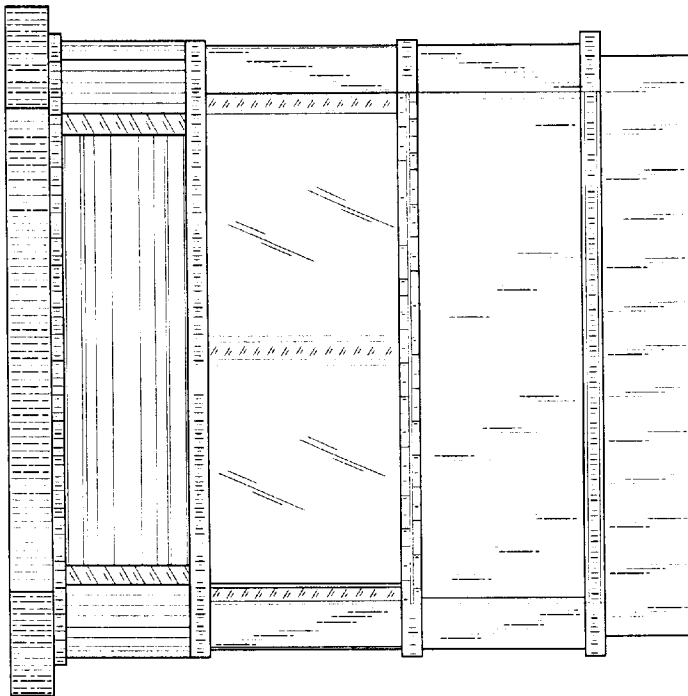


FIG. 1

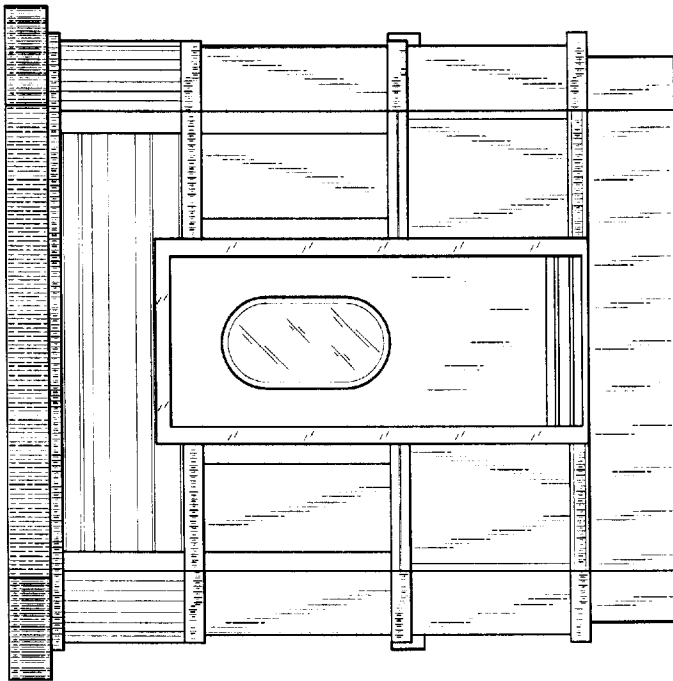


FIG. 2

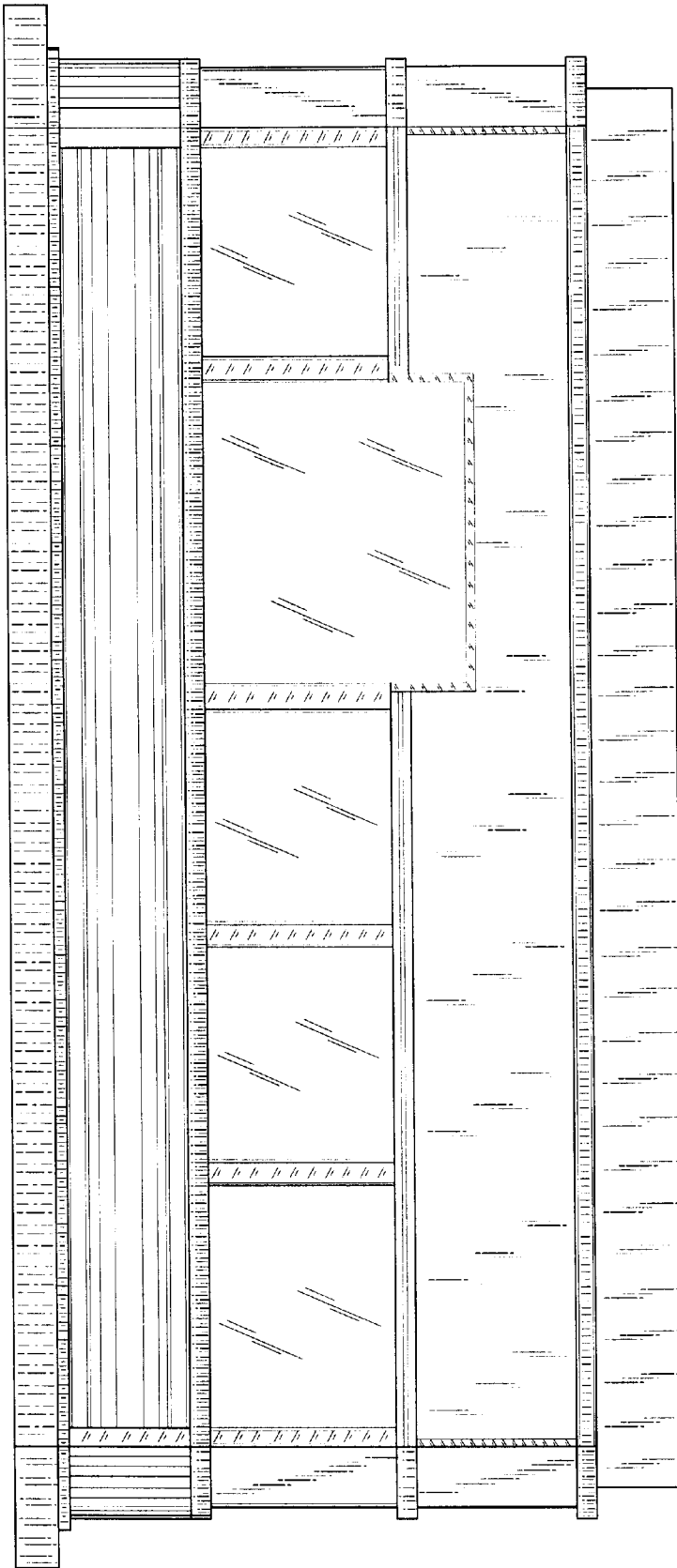


FIG. 3

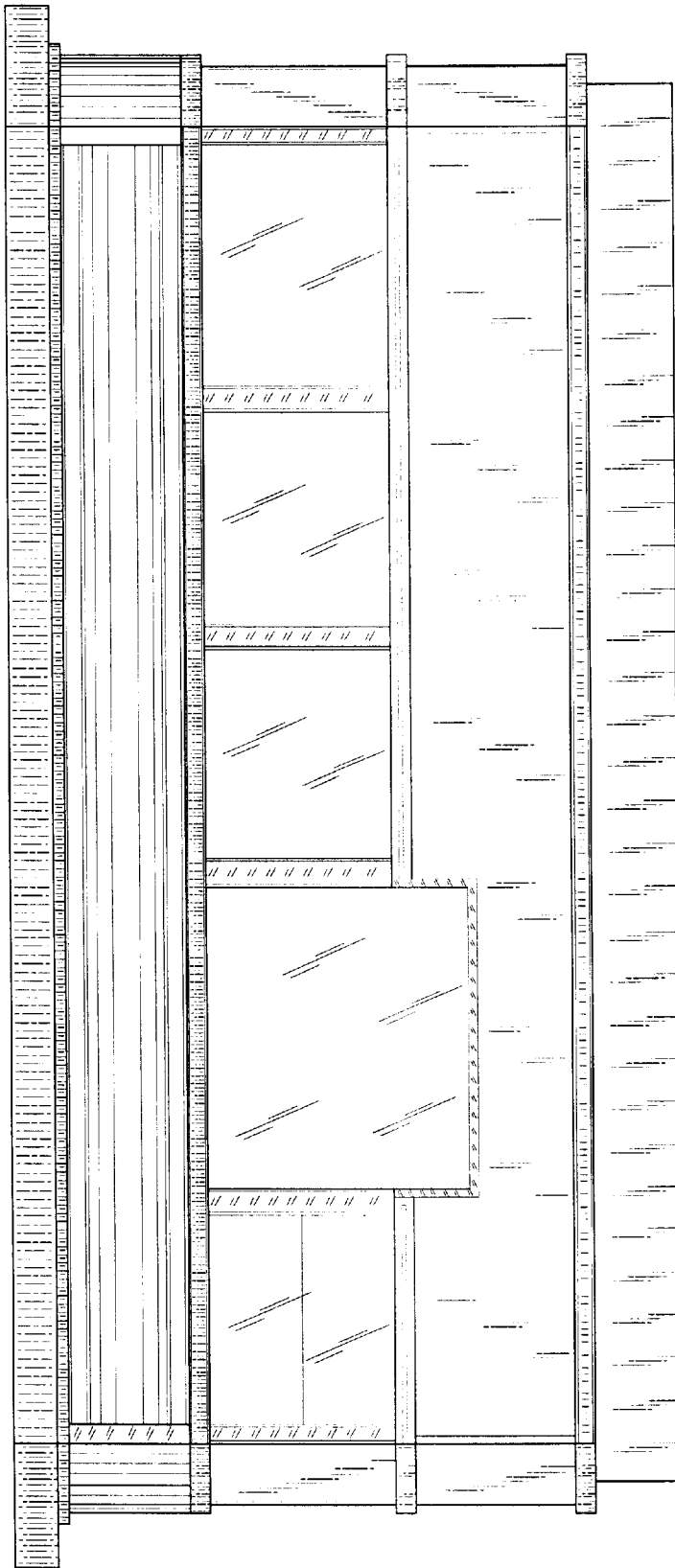


FIG. 4

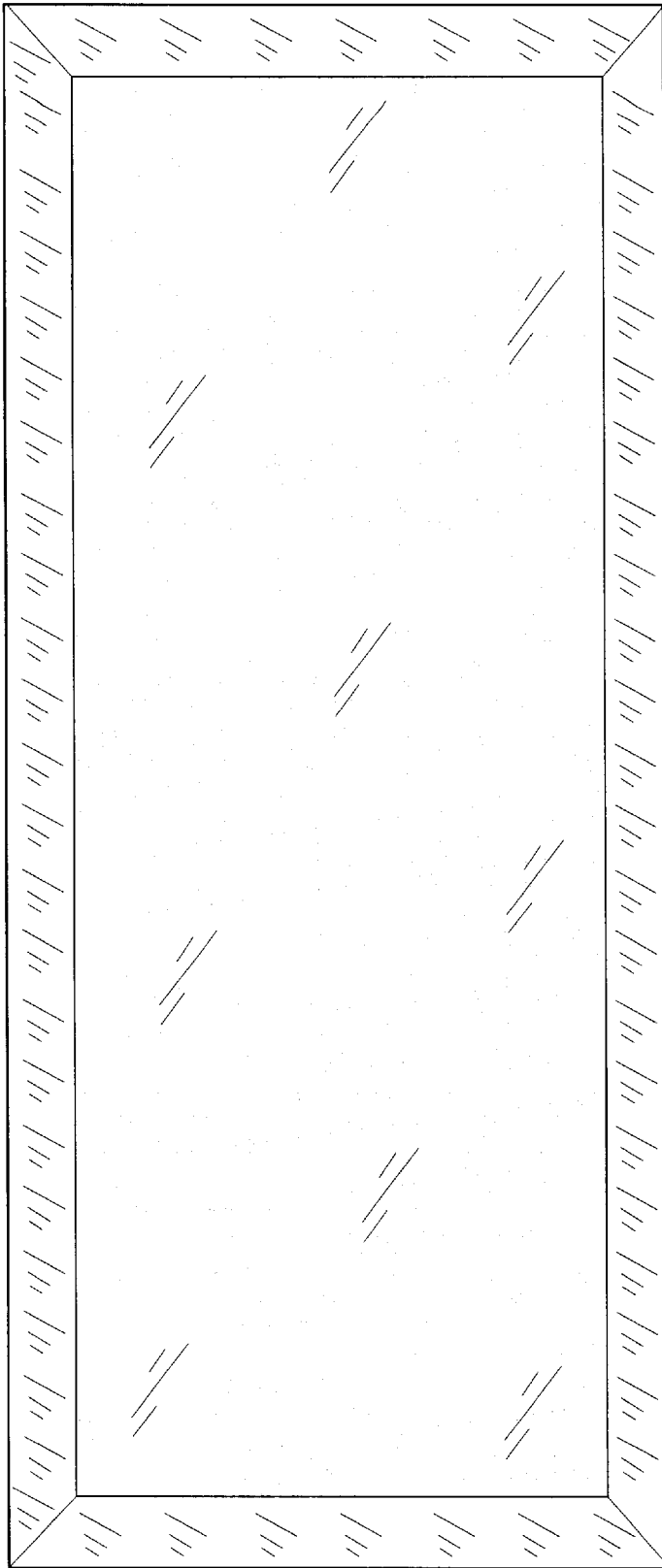


FIG. 5

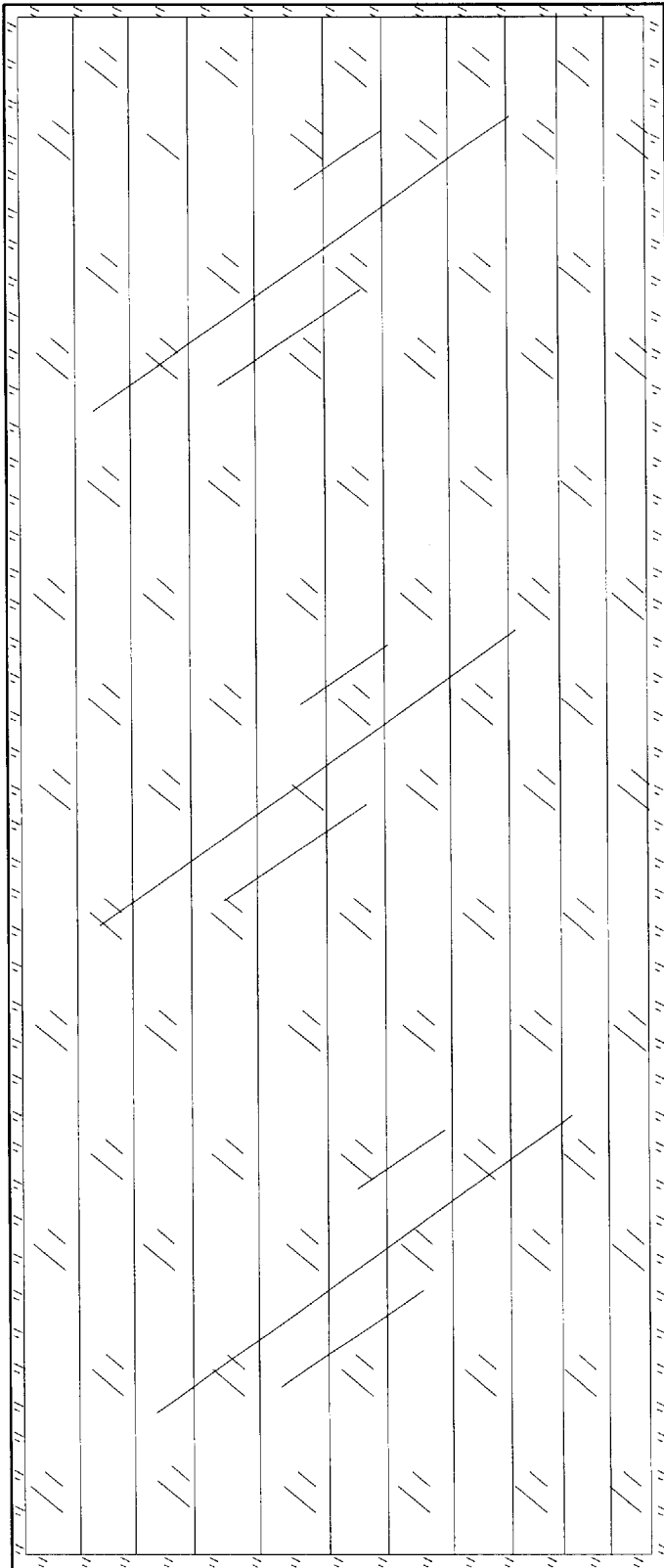


FIG. 6