



(12) **United States Design Patent**
Anderson

(10) **Patent No.:** **US D630,821 S**
(45) **Date of Patent:** **** Jan. 18, 2011**

- (54) **BLOUSE**
- (76) Inventor: **Sofia S. Anderson**, 1811 S. Primrose Ave., Alhambra, CA (US) 91803
- (**) Term: **14 Years**
- (21) Appl. No.: **29/342,240**
- (22) Filed: **Aug. 20, 2009**

JP 2005213701 8/2005

OTHER PUBLICATIONS

Shophia.com. <http://www.shophia.com/img/product/shopgoldyn-designer-apparel-designer-dresses-jeans/flutter-sleeve-dress-with-french-knot.jpg>. Date Unknown: Viewed Jun. 2010. Flutter Sleeve Dress.*
 Disal7 Collections. <http://disal7.webs.com/>. Date Unknown: Viewed Jun. 2010. Nursing T-Shirt.*
 Growing Mommies. <http://www.growingmommies.com/nursing-pajamas/blue-nursing-pajamas.html>. Date Unknown: Viewed Jun. 2010. Blue Nursing Pajamas.*

- (51) **LOC (9) Cl.** **02-02**
- (52) **U.S. Cl.** **D2/840**
- (58) **Field of Classification Search** D2/717, D2/720, 728, 749-751, 823, 826, 840-842, D2/844; 2/69, 102, 104, 106, 113, 115, 46
See application file for complete search history.

* cited by examiner

Primary Examiner—Stella M Reid
Assistant Examiner—Rashida Johnson
 (74) *Attorney, Agent, or Firm*—Michael I Kroll

(56) **References Cited**

U.S. PATENT DOCUMENTS

- 1,497,685 A 6/1924 Hoyme
- 2,124,366 A * 7/1938 De Lasarte 2/114
- D127,048 S * 5/1941 Cashin D2/823
- D144,466 S * 4/1946 Miller D2/831
- D158,228 S * 4/1950 Stein D2/831
- 2,692,989 A 11/1954 Jelstrup
- 2,818,573 A 1/1958 O'Donnell
- D202,869 S * 11/1965 Ryan D2/840
- 3,381,306 A 5/1968 Innes
- 3,574,864 A 4/1971 Bradley
- 3,665,518 A 5/1972 Leadford
- D272,959 S * 3/1984 Waite D2/750
- 4,528,699 A * 7/1985 Hughes 2/104
- D306,510 S * 3/1990 Sanchez D2/728
- 5,001,784 A 3/1991 Orlando, Jr.
- 5,946,722 A 9/1999 Trautmann
- 6,014,772 A 1/2000 Connelly
- D495,119 S * 8/2004 Ashida D2/823
- D595,934 S * 7/2009 Senior-Bundrick D2/840

FOREIGN PATENT DOCUMENTS

- JP 2000355804 12/2000
- JP 2002013011 1/2002

(57) **CLAIM**

The ornamental design for a blouse, as shown and described.

DESCRIPTION

FIG. 1 is a front perspective view of a blouse showing my new design in use;

FIG. 2 is a rear perspective view thereof;

FIG. 3 is another front perspective view thereof;

FIG. 4 is a left side perspective view thereof, showing the sleeves of the blouse in a raised position;

FIG. 5 is a right side view thereof;

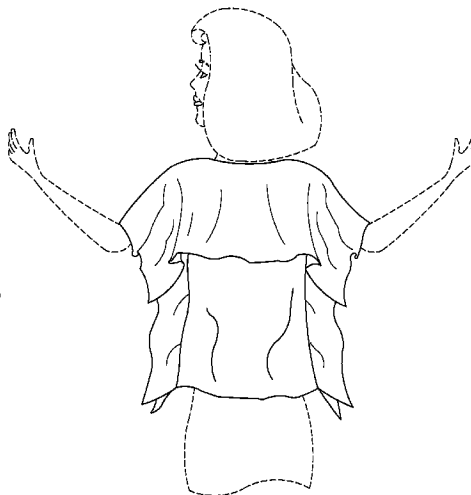
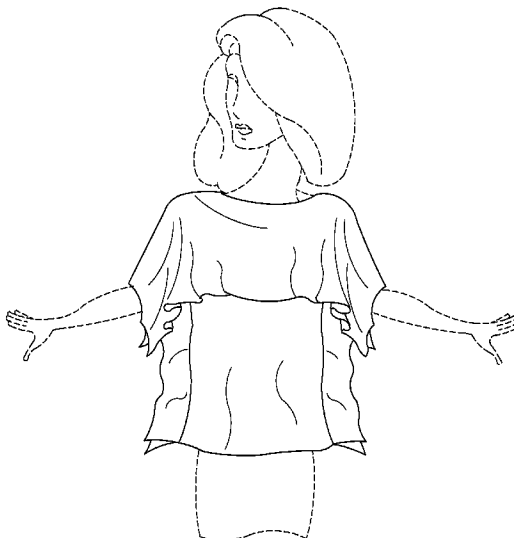
FIG. 6 is another front perspective view of FIG. 1;

FIG. 7 is a top plan view of the blouse not shown in use; and,

FIG. 8 is a bottom plan view thereof.

The broken lines shown in FIGS. 1-3 and 6, showing portions of the human form and a portion of a skirt, are included for illustrative purposes to show the design in use and form no part of the claim.

1 Claim, 8 Drawing Sheets



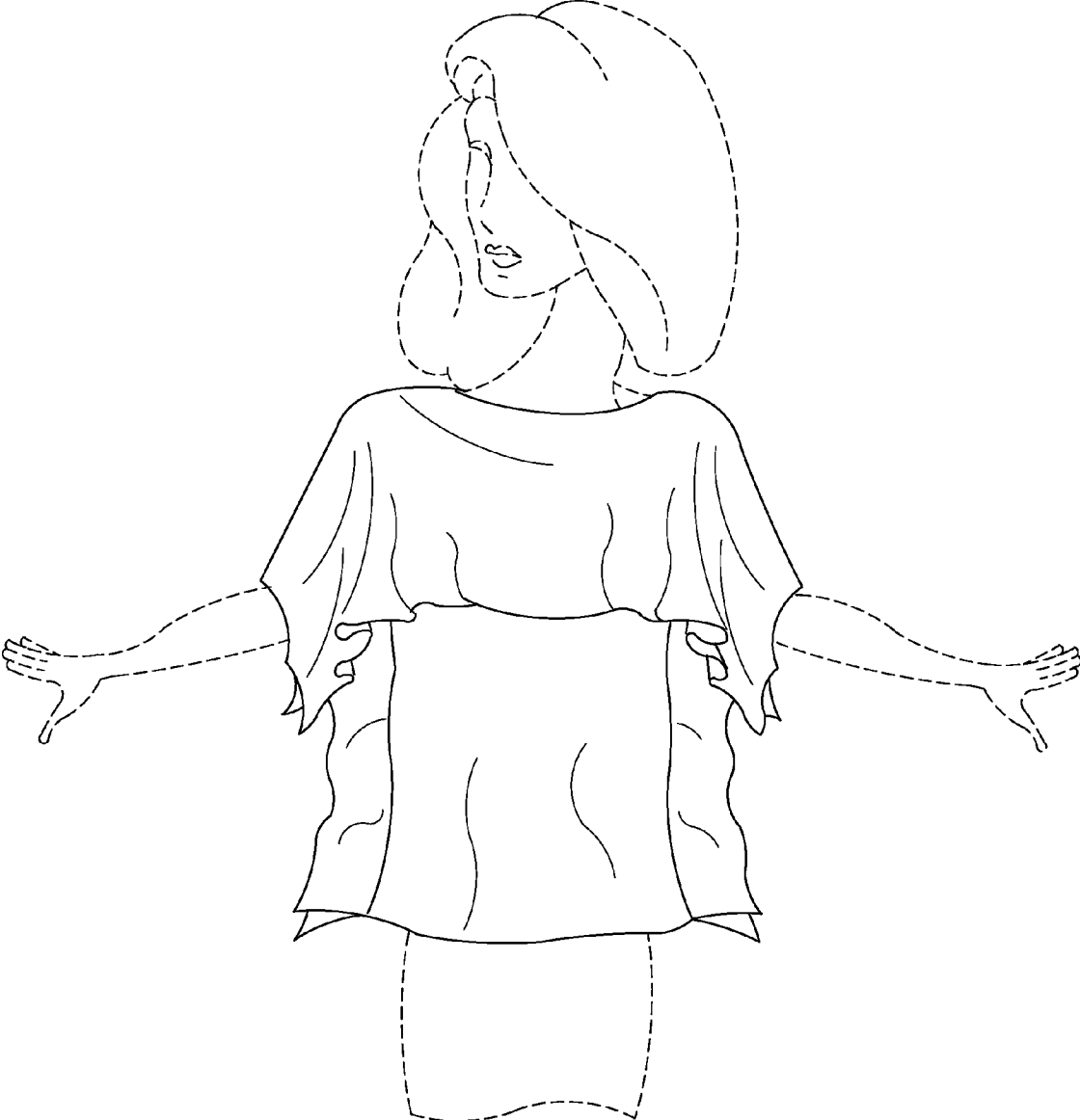


FIG. 1

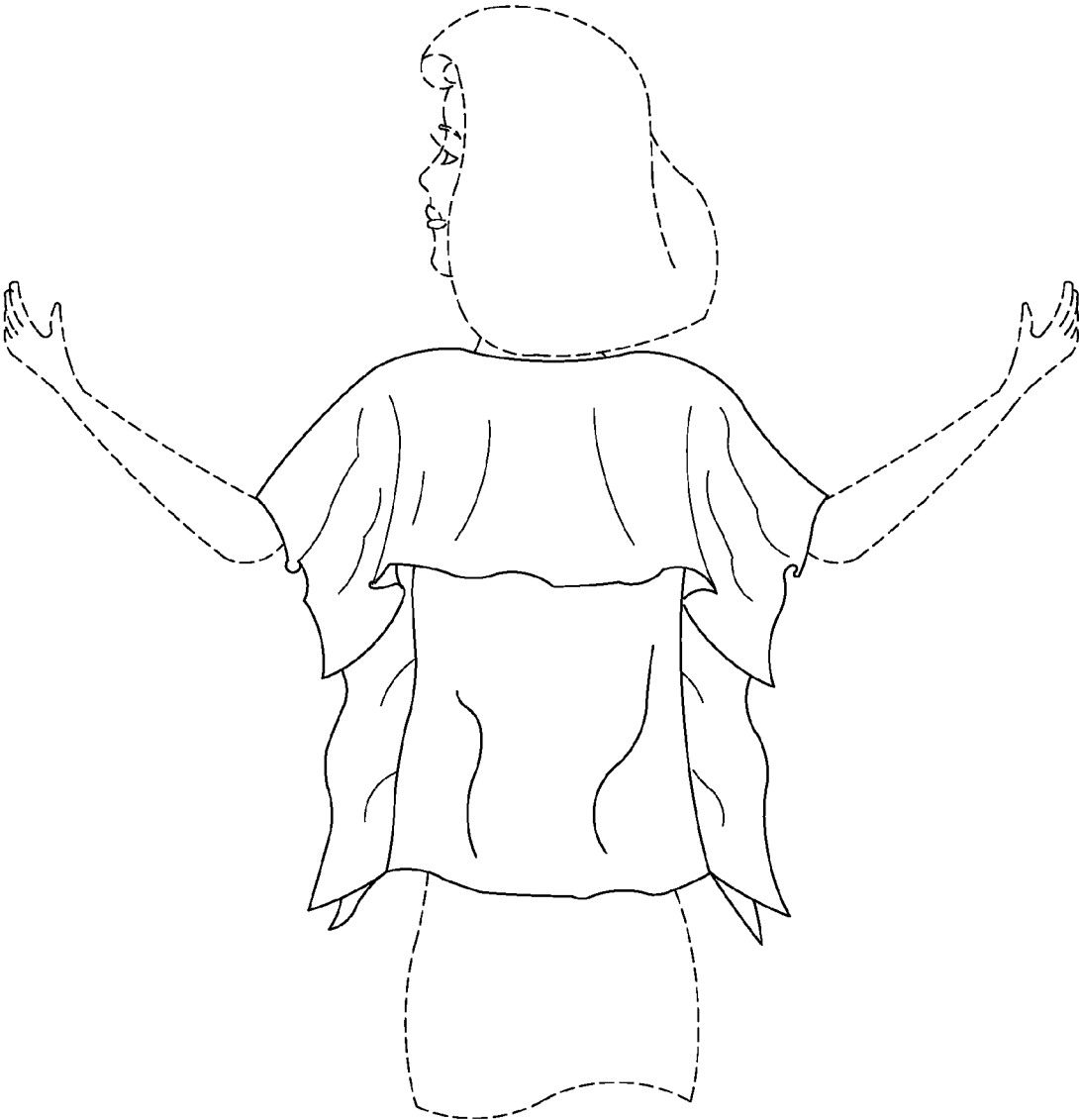


FIG. 2

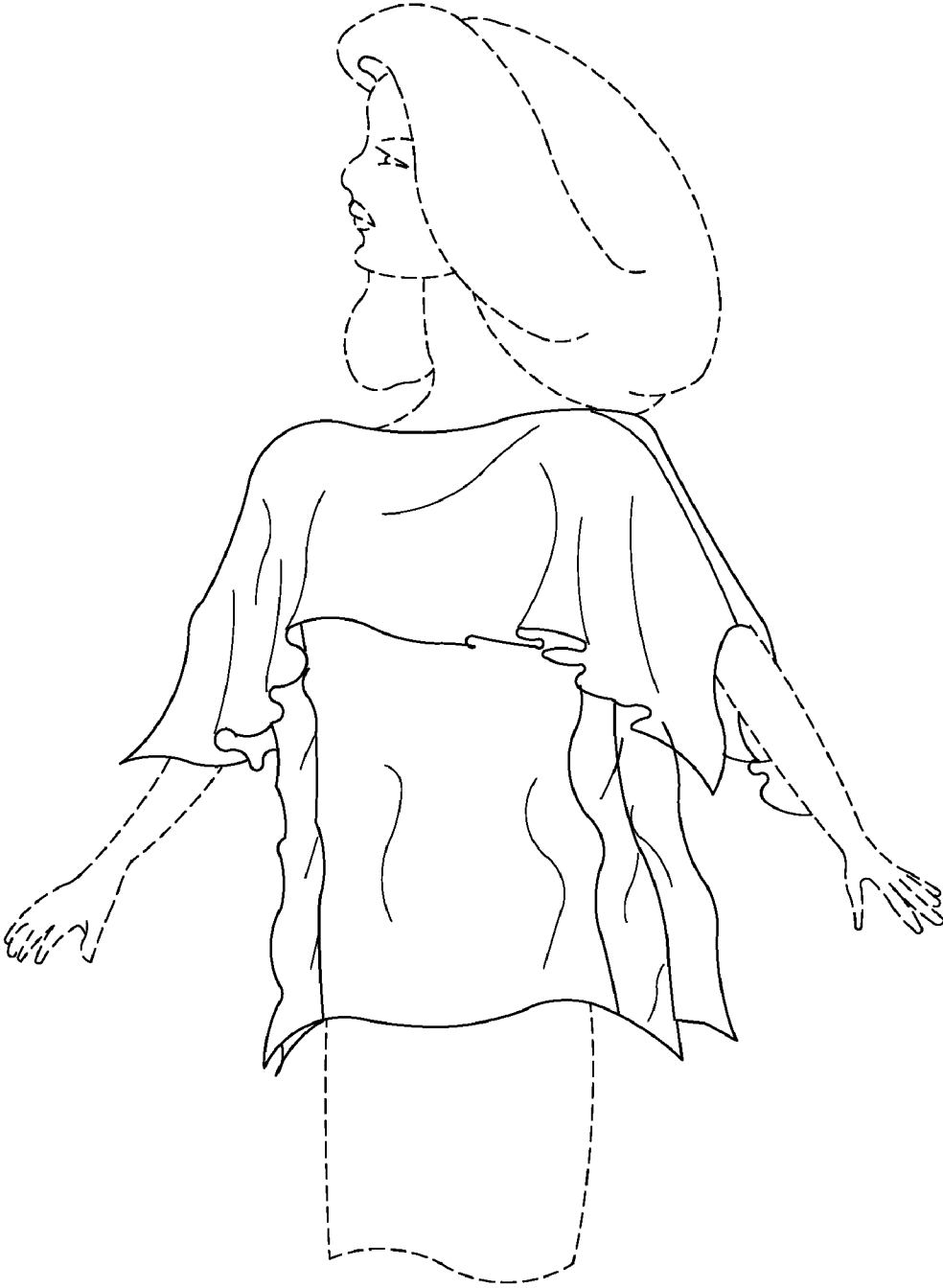


FIG. 3

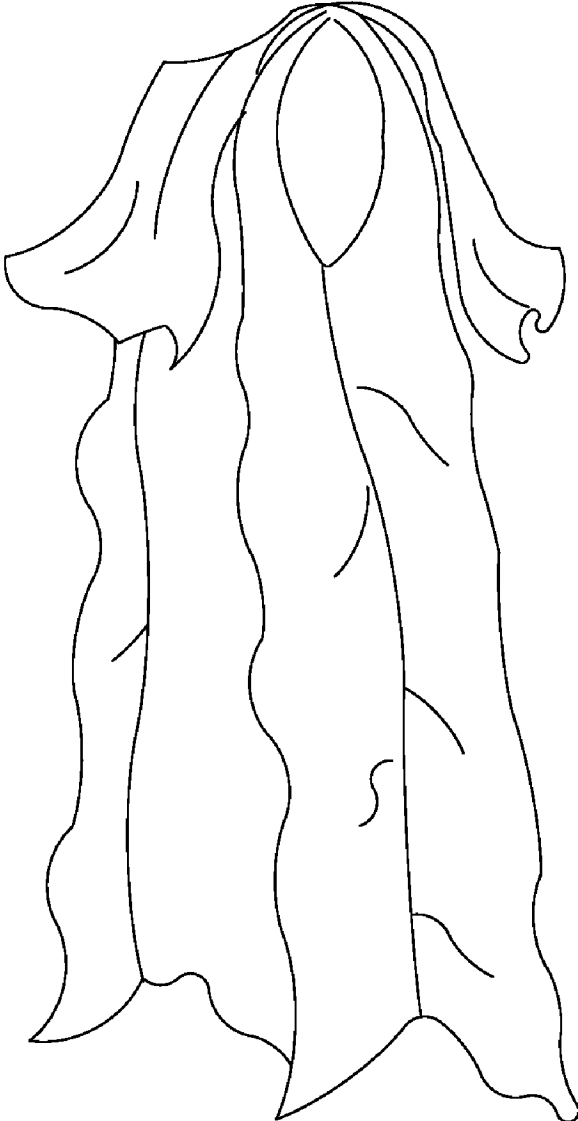


FIG. 4

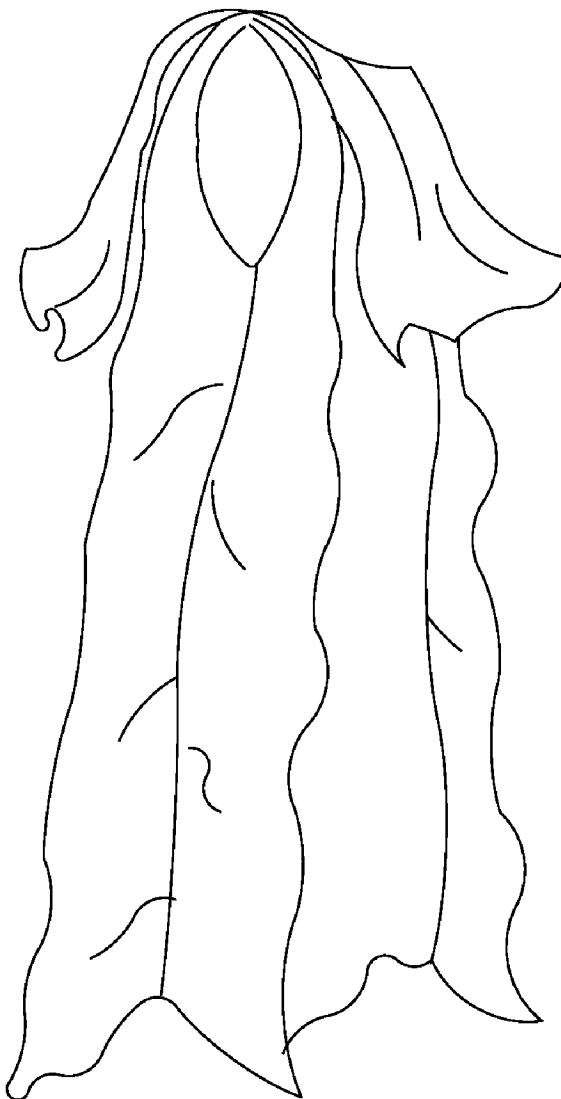


FIG. 5

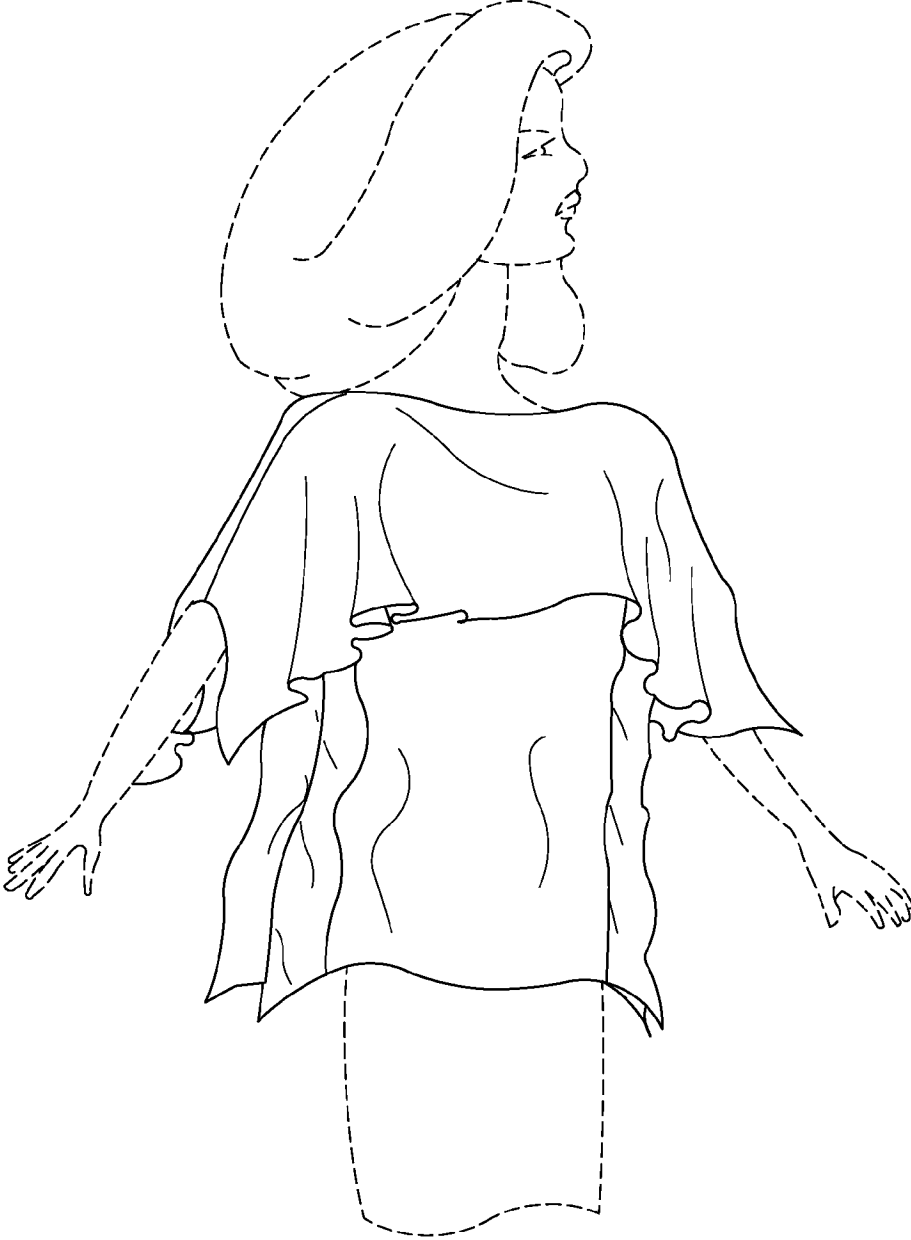


FIG. 6

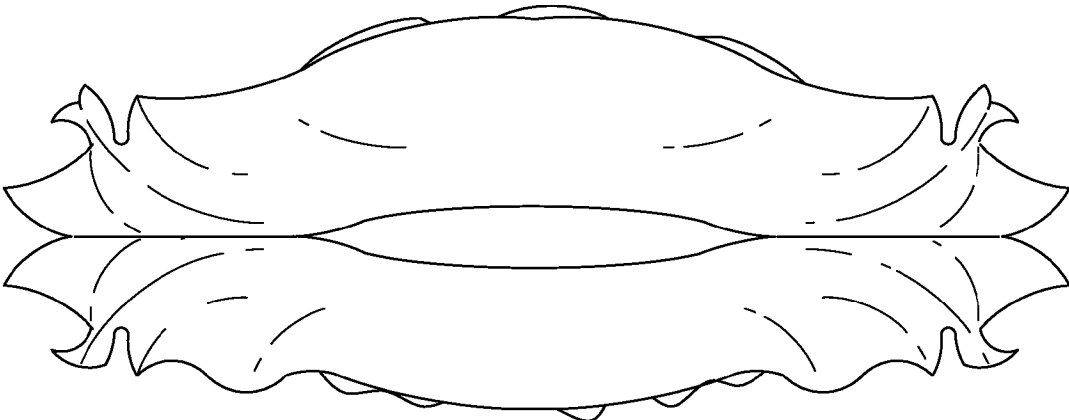


FIG. 7



FIG. 8